




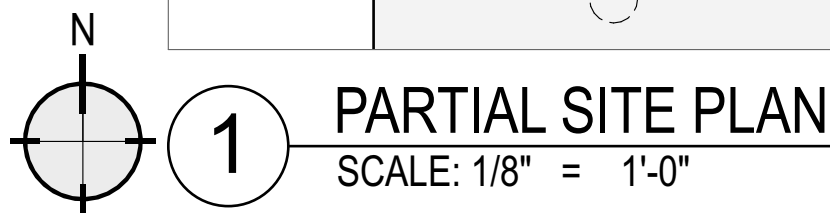
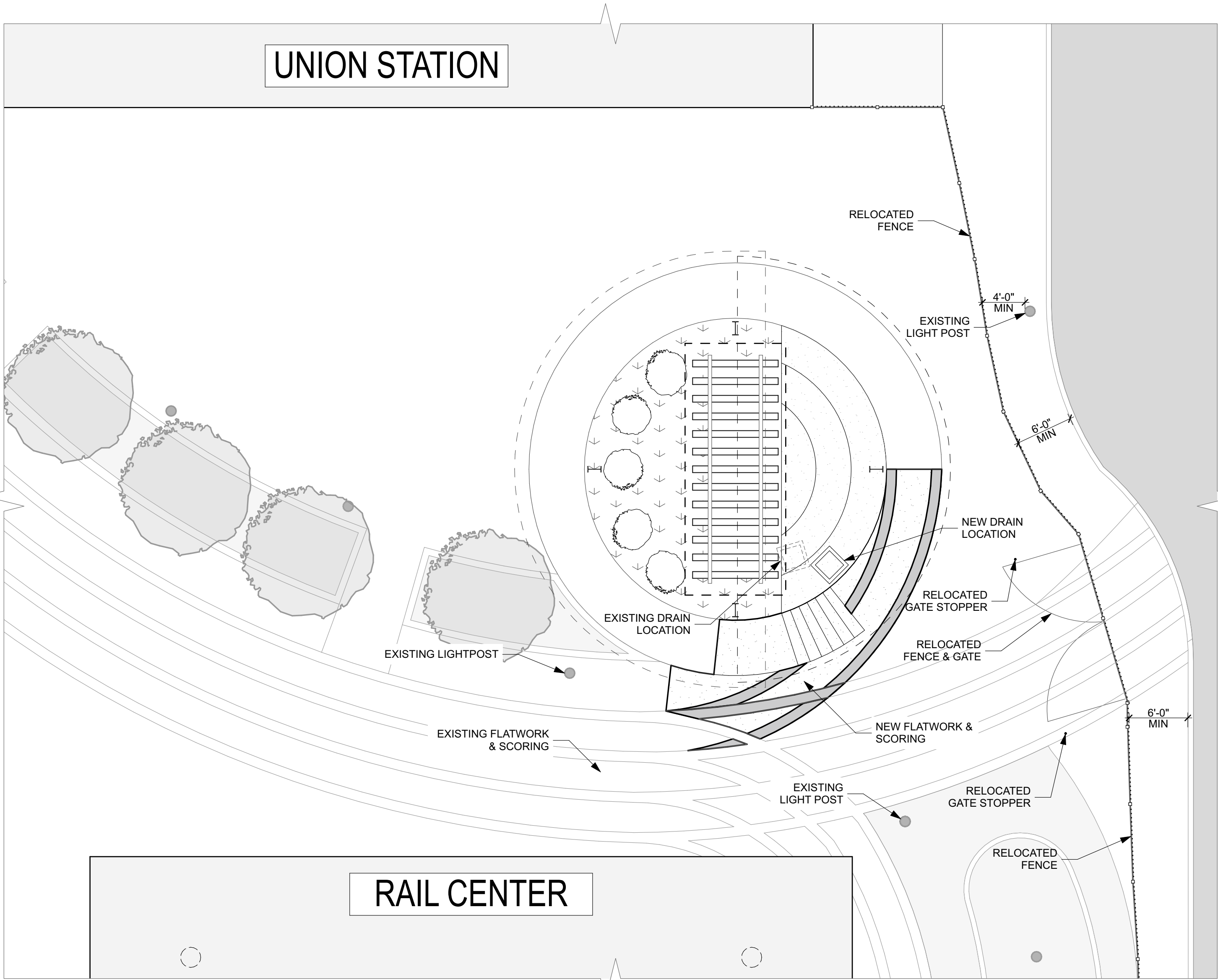
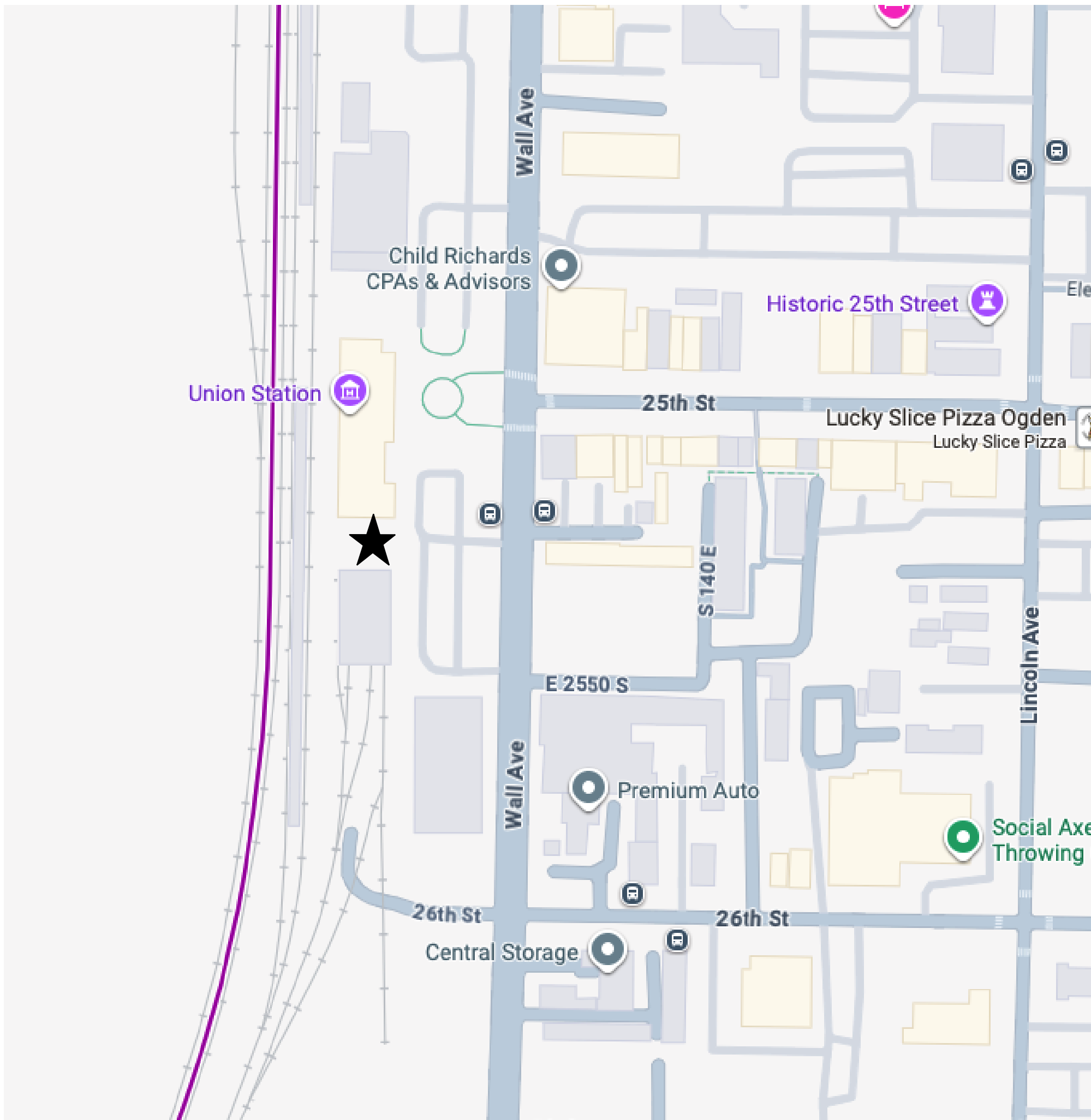
Merci Car Display For:

# UNION STATION

2501 WALL AVE  
OGDEN, UT 84401

A/E/C TEAM:

	<b>ARCHITECTURAL:</b> Mountain West Architects 543 25th St. Ogden, UT 84401 CONTACT: Chad Hansen PHONE: 801-499-2787 E-MAIL: chad@mountainwestarchitects.com
	<b>STRUCTURAL:</b> ARW Engineers 1594 Park Circle, Ogden, UT 84404 CONTACT: Justin Naser PHONE: 801.782.6008 ext. 8206 E-MAIL: justinn@arwengineers.com
	<b>ELECTRICAL:</b> Todd Payne, P.E. 1823 East Center Street Pocatello, ID 83201 CONTACT: Bill Knudsen PHONE: 801-814-8416 E-MAIL: bill@mountainwestarcitects.com



- GENERAL NOTES:**
- It is the responsibility of the Contractor and his Subcontractors to verify all existing conditions prior to submission of the bid, ordering of materials, and the commencement of any work.
  - Contractor shall meet with each subcontractor on site to review all aspects of their work prior to each subcontractor commencing work. In addition, a walk through of the project will be scheduled by the architect for all prospective bidders.
  - All utility information shown is approximate. The contractor shall field verify the exact location of all utilities (whether shown or not) prior to commencement of work. The contractor shall notify the architect of the discovery of any utilities not shown or noted on the drawings.
  - Prior to start of work, Contractor shall verify all grades, ramps, walkways, grading shown will conform with local/state regs for accessibility, site access, proper storm water flow, and connection to existing grades.
  - It is understood by the Contractor by submitting their bid, that this set of documents shows basic scoping design relationships of the improvements. It is the responsibility of the Contractor to coordinate the installation and quality of all building systems (new and existing), materials, fixtures, and equipment so that they are code compliant and meet the Owner's approval in every aspect.
  - All work shall be done in a safe and workmanlike manner and in strict compliance with local and state building codes, National Electric Code (NEC), ADA/ANSI Accessibility requirements and OSHA requirements.
  - The existing building and adjacent spaces shall be protected from dust migration into adjacent spaces. Install dust barriers as required to keep dust from penetrating adjacent areas. This shall include evaluating mechanical systems and developing a plan to prevent these systems from spreading dust.
  - The contractor shall be responsible to maintain the integrity of building security and ensure adjacent spaces are secure at all times. The contractor shall coordinate with the owner on a plan to allow access to the project for customers that is acceptable to the owner.
  - The contractor shall keep the work area clean and free of debris. No flammable materials or liquids may be stored in the work area. No smoking shall be allowed in the work area.
  - Repair, reroute and extend all services, piping, conduit of existing systems as required during the construction process to achieve a complete installation. This includes all items not specifically shown on the drawings but are nevertheless required for a complete installation.
  - Where existing finishes and materials are to remain, contractor shall paint, patch and repair so new work blends into the adjacent existing surfaces. All existing surfaces shall be protected from damage.
  - Contractor shall be responsible for developing and conforming to a schedule that is mutually agreed upon by the Owner/ Tenant and Contractor. It is the responsibility of the contractor to coordinate ordering and delivery of materials in a manner that preserves the scheduled project completion dates.
  - Contractor is required to have scheduled special inspections as required by the IBC chapter 17 including all items 1-5 in section 1704.3.1.
  - Utility Coordination - Contractor and each appropriate utility subcontractor shall coordinate and verify all requirements and approvals with local utility companies PRIOR TO START OF CONSTRUCTION. Contractor in conjunction with appropriate utility company shall coordinate and verify storm water connections and inverts, sewer connections and inverts, water connections, gas connections and electrical connections and all other utilities for the project. Contractor shall notify the architect prior to start of construction of any discrepancies related to the design. Electrically, contractor and electrical contractor shall coordinate location, routing, conduit size and transformer pad location for service with local power company. Contact the architect with any field discrepancies to design prior to the start of construction.
  - The Architect's project manual is hereby made a part of the contract documents along with these drawings. It shall be the contractor's responsibility to have the very latest plans and specs which have been approved by the Authority Having Jurisdiction (AHJ) available administratively and onsite for construction - including addendums, building department review comments and responses, change order documentation, RFIs, utility directives, etc.
  - Subcontractor Responsibility - All subcontractors shall be responsible for meeting the requirements of all current applicable building codes and enforcement agencies. Further, to meet the requirements of any building department, fire marshal, or any other building code enforcement officer.
  - Changes in work note to all contractors - Contractor shall bear all responsibility for modifications required in architectural, structural, electrical, or plumbing systems due to substitution of equipment.

SYMBOL SCHEDULE		
1	Detail Title SCALE: 1/8"=1'-0"	DETAIL LABEL
3 A302		DETAIL ID
2 A301		SECTION ID W/CUT LINE
1 A201		ELEVATION ID
A.S		GRID ID
N		NORTH ARROW

GENERAL	
G001	COVER PAGE
STEEL STRUCTURAL	
S001	STRUCTURAL NOTES
S010	SCHEDULES
S101	FOOTING & FOUNDATION PLAN
S210	FOUNDATION DETAILS
S220	FRAMING DETAILS
ARCHITECTURAL	
A101	DEMOLITION/FLOOR PLAN
A102	RCP/ROOF/FRAMING
A103	ELEVATIONS/SECTION
ELECTRICAL	
E111	LIGHTING PLAN

PRELIMINARY  
DRAWING -  
NOT FOR  
CONSTRUCTION



Union Station  
**MERCI CAR DISPLAY CANOPY**  
2501 WALL AVE  
OGDEN, UT 84401

PROJECT: MOUNTAIN WEST ARCHITECTURE | 543 25TH STREET - OGDEN, UT 84401 | PH: 801-398-6052 | www.mountainwestarchitecture.com

SHEET TITLE:  
**COVER PAGE**

SHEET NUMBER:  
**G001**

PROJECT: CM-219  
DO NOT SCALE DRAWING





Diagram illustrating the elevation view of a shear plate connection. The diagram shows a vertical W BEAM (labeled 'W BEAM - SEE PLAN') connected to a horizontal FACE OF COLUMN / BEAM WEB. The shear plate is attached to the column/web face using four bolts. The bolts are spaced 3" TYP. (typical) apart. The distance from the face of the column/web to the first bolt is 1/2". The distance from the last bolt to the face of the column/web is 1/2". The distance from the center of the first bolt to the center of the last bolt is 3" TYP. The bolts are labeled 'Leh' (Lehigh). The shear plate is labeled 'SHEAR PLATE - SEE SCHEDULE'. The connection is labeled 'SHORT-SLOTTED HOLES IN SHEAR PLATE W/ WASHER PER THE STRUCTURAL NOTES'. A section line '1-A' is shown at the bottom right, pointing to the connection. A note 'SEE SCHEDULE' is located at the bottom right.

BEAM DEPTH	PLATE DIMENSIONS W/ SHORT- SHLOTTED HOLES	Lev	Leh	BOLTS W/ STANDARD WASHERS OVER SLOTS		WELD 'A'	COMMENTS
				NO.	SIZE		
W12 (SKEW PLATE)	PLATE 5/16" x REQ'D.	1 1/2"	2 1/2"	3	3/4"Ø	1/4"	---
W12	PLATE 5/16" x REQ'D.	1 1/2"	2"	3	3/4"Ø	1/4"	---
C15	PLATE 5/16" x REQ'D.	1 1/2"	2"	3	3/4"Ø	1/4"	---

MARK	WIDTH	LENGTH	THICK	LENGTHWISE REINF.	CROSSWISE REINF.	REMARKS
F8	8'-0"	8'-0"	2'-0"	(8) #7	(8) #7	REINFORCE TOP AND BOTTOM



SEAL:

[illegible]

Merci Car Display For:  
**UNION STATION**  
2501 WALL AVE  
OGDEN, UT 84401

PROJECT:

SHEET TITLE:

## SCHEDULES

PROJECT: CM-092-State Parking Garage

SHEET NUMBER:

**S010**

DO NOT SCALE DRAWING

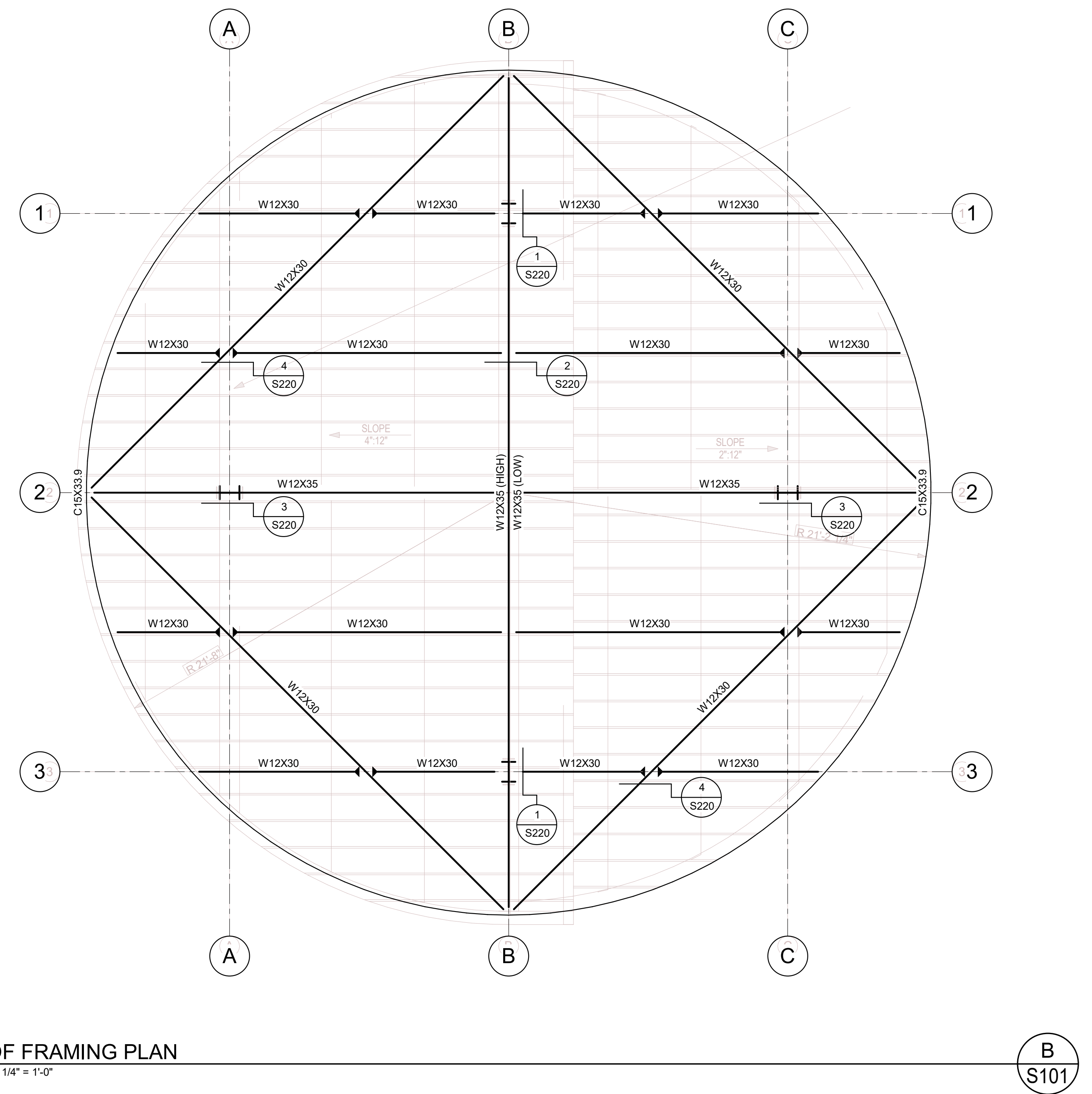
## Project Status



# FOOTING & FOUNDATION PLAN

**S101**

DO NOT SCALE DRAWING



## Project Status



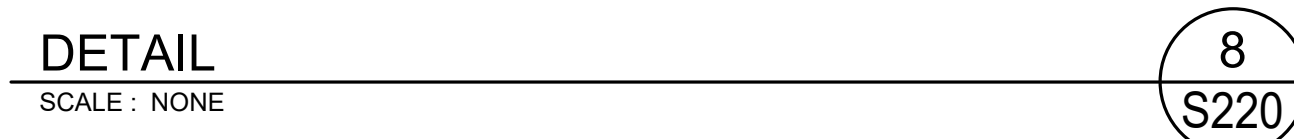
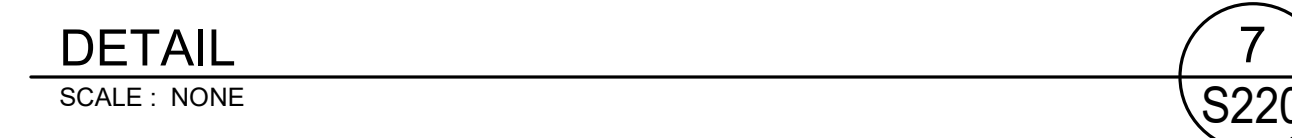
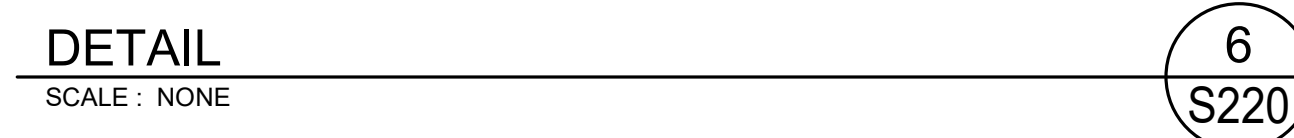
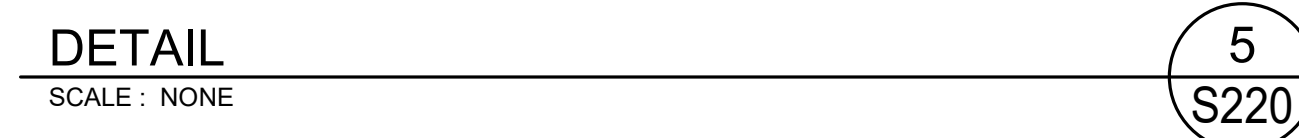
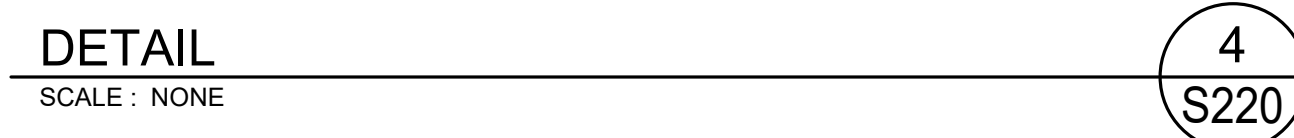
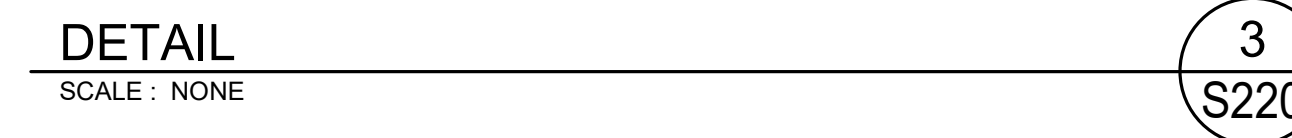
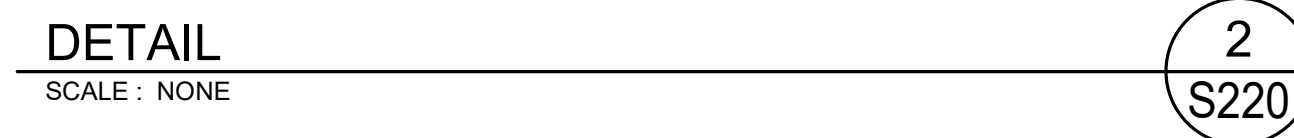
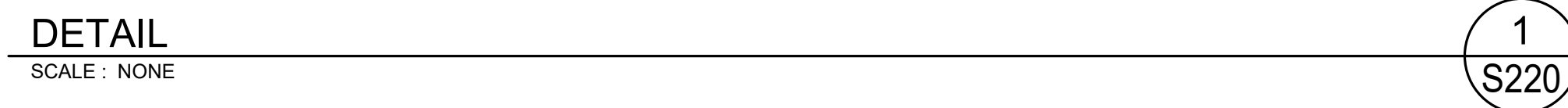
## Project Status

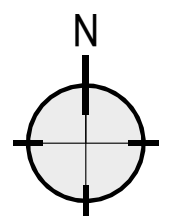
[illegible]

SEAL:

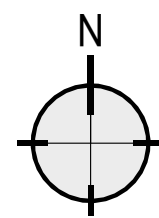
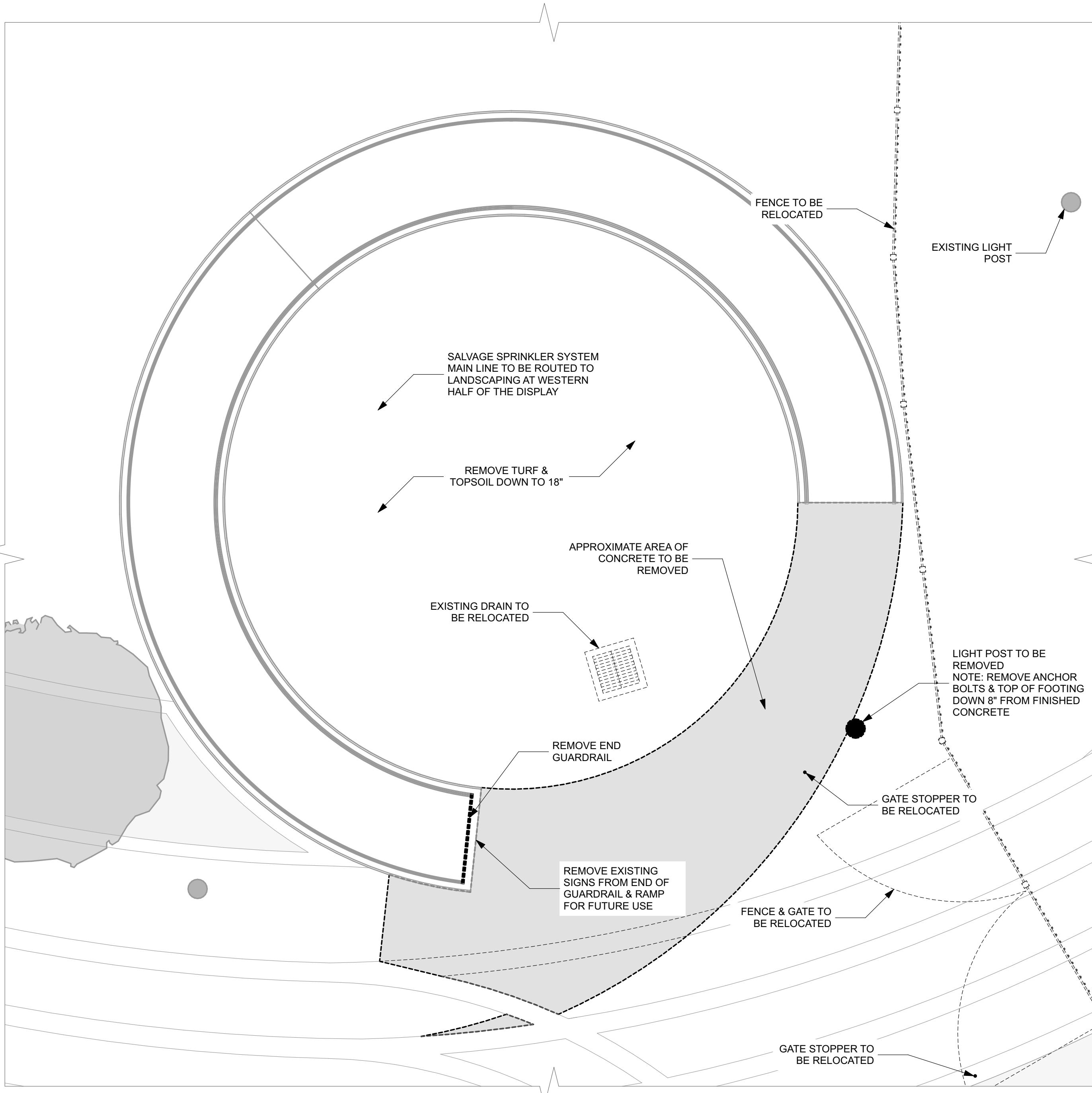




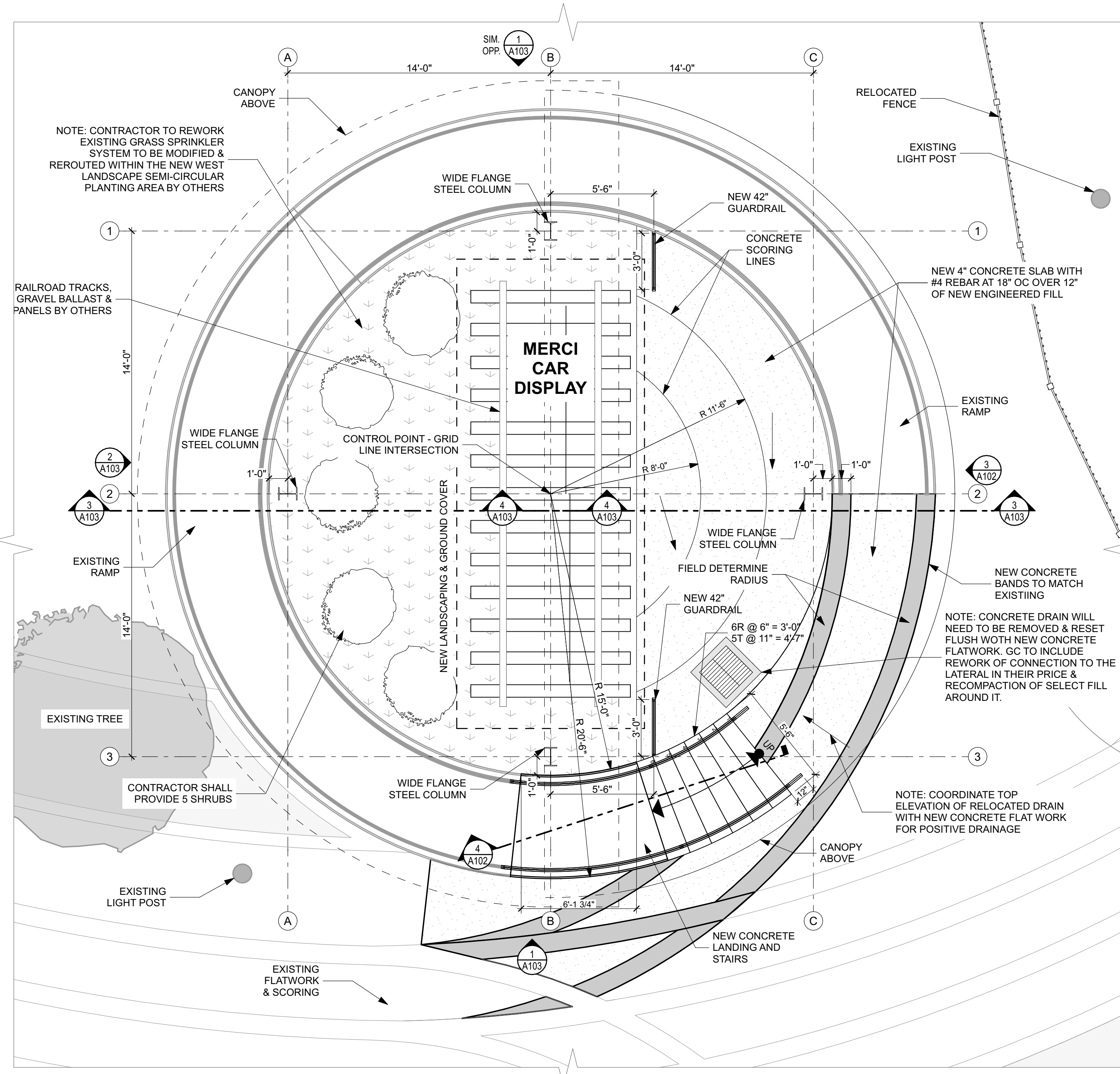




**1 DEMO PLAN**  
SCALE: 1/4" = 1'-0"



**2 MAIN LEVEL FLOOR PLAN**  
SCALE: 1/4" = 1'-0"



PRELIMINARY  
DRAWING -  
NOT FOR  
CONSTRUCTION



MOUNTAIN WEST  
ARCHITECTURE

SEAL:

REV	DATE	DESCRIPTION
1	10-23-2025	PROGRESS SET

PROJECT: Union Station  
**MERCIE CAR DISPLAY CANOPY**  
2501 WALL AVE  
OGDEN, UT 84401

MOUNTAIN WEST ARCHITECTURE | 543 25TH STREET - OGDEN, UT 84401 | PH: 801-398-6052 | www.mountainwestarchitecture.com

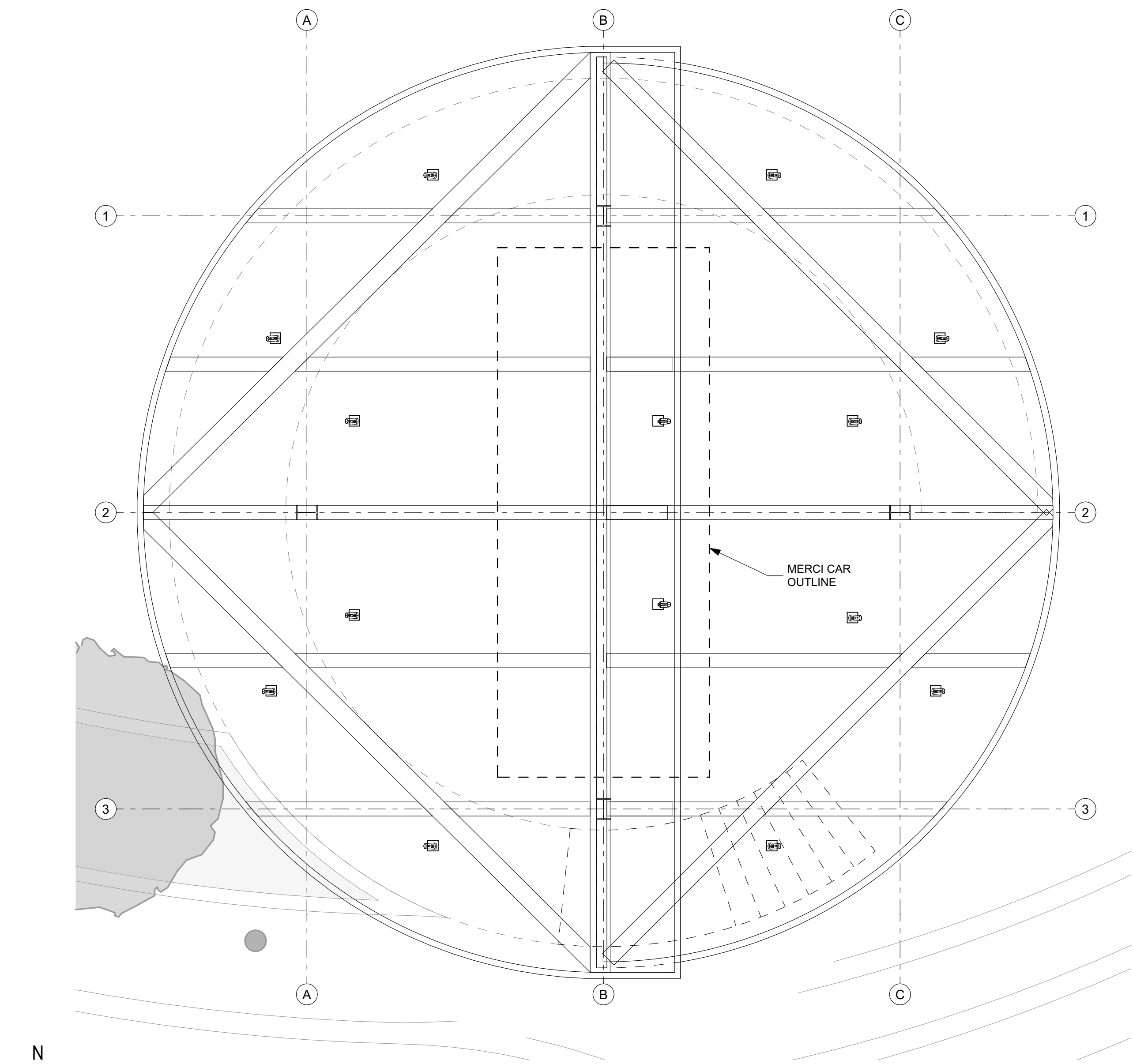
SHEET TITLE:  
**DEMOLITION/FLOOR PLAN**

SHEET NUMBER:  
**A101**

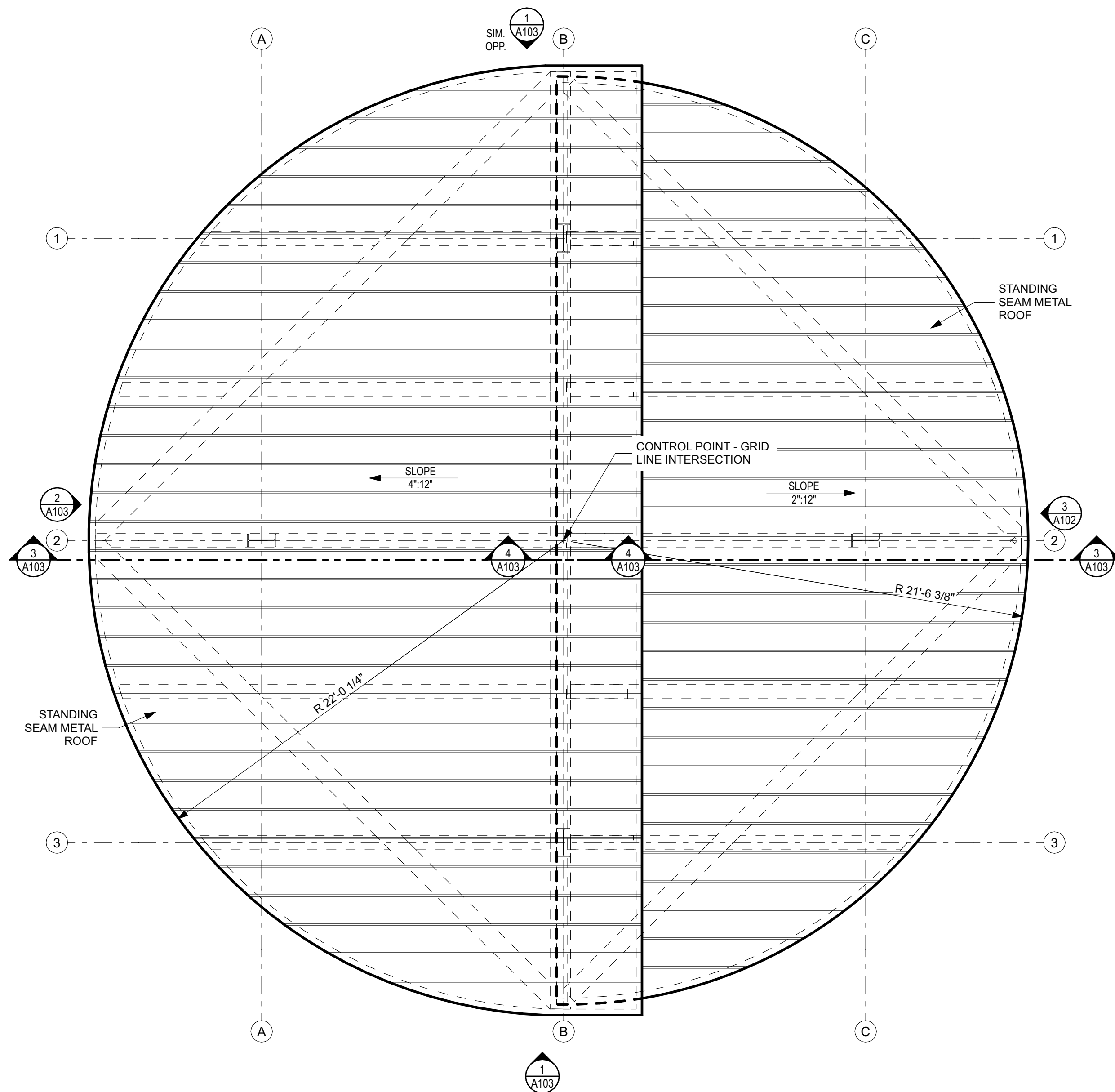
PROJECT: **CM-219**

DO NOT SCALE DRAWING

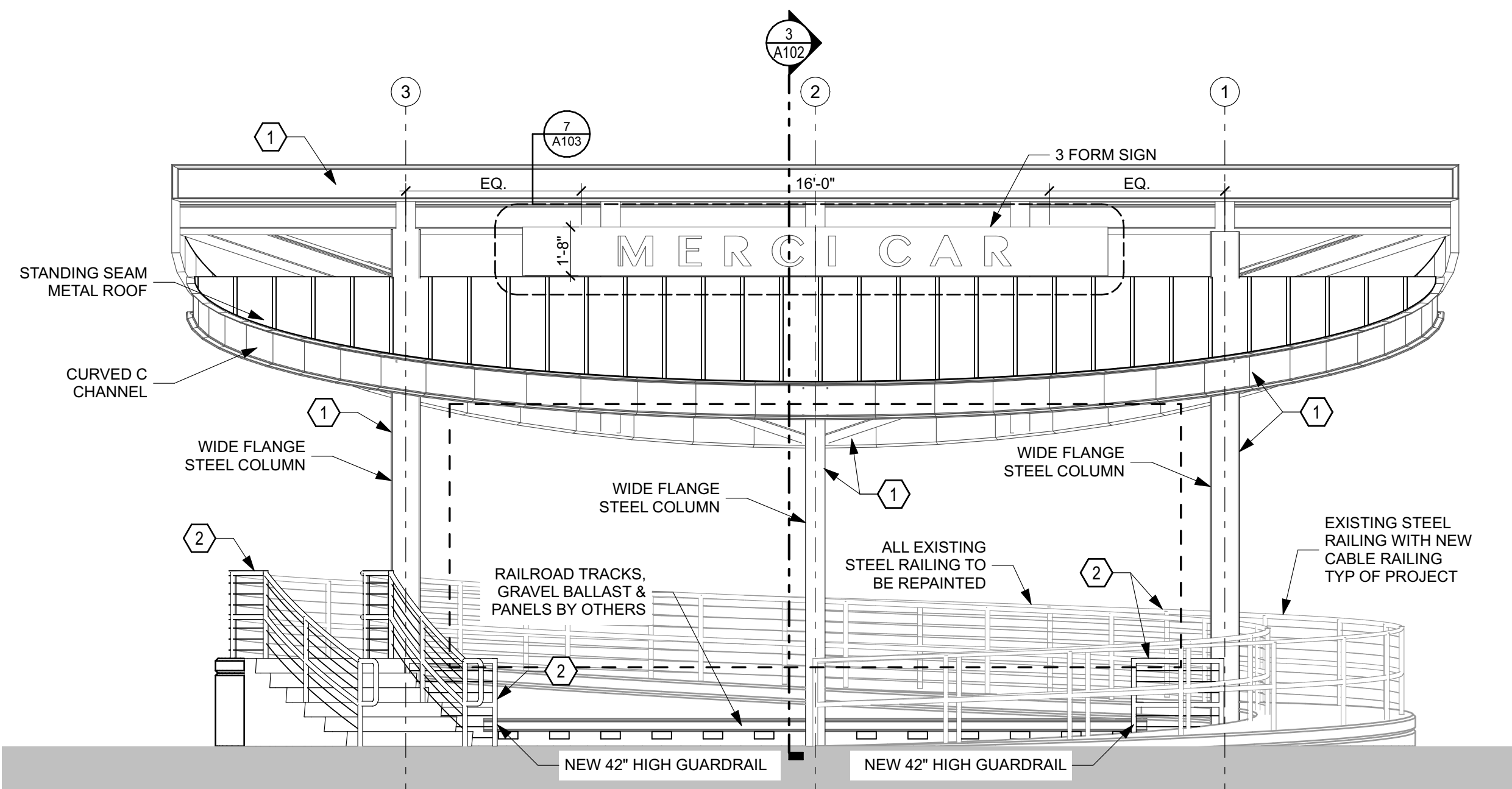




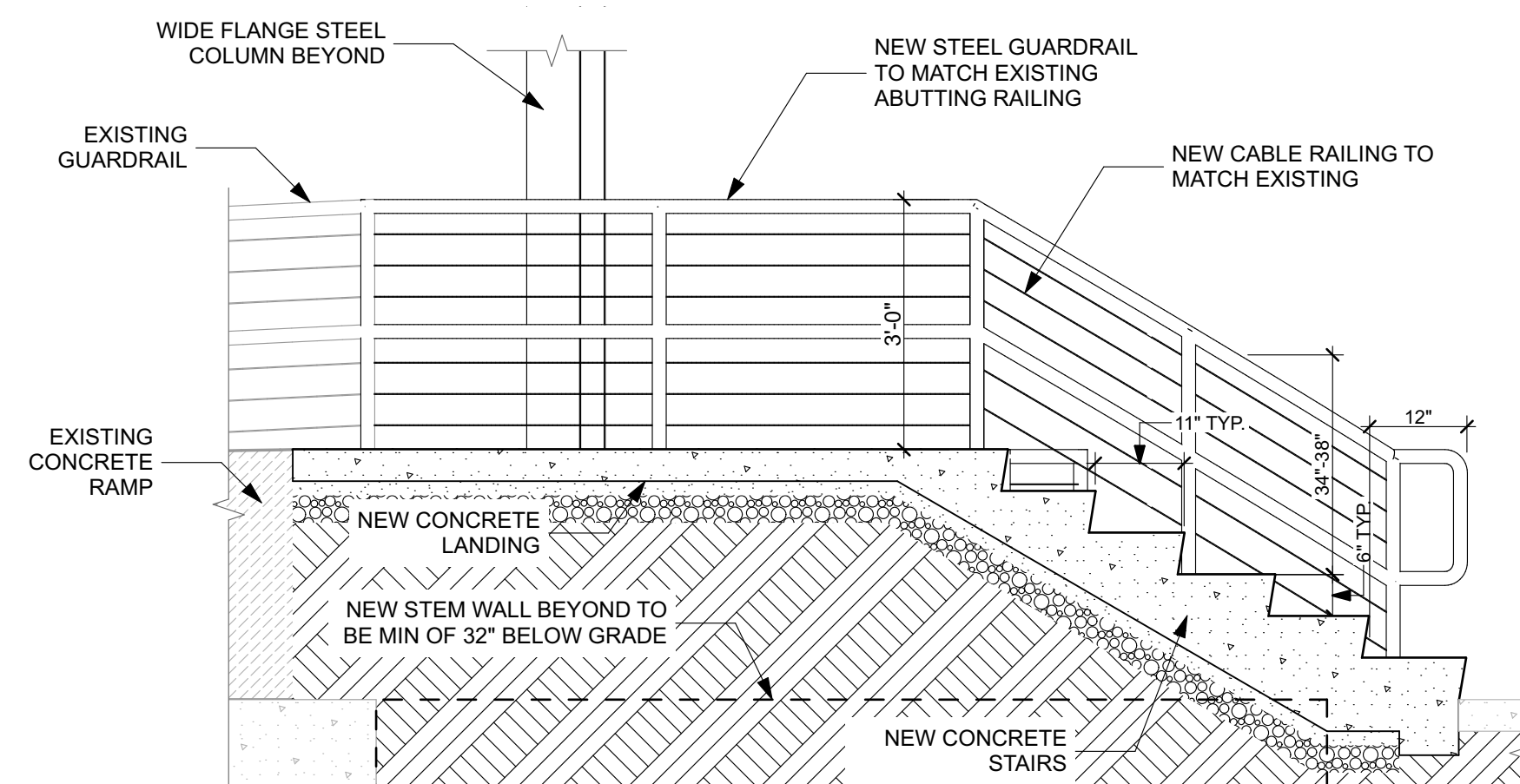
1 MAIN LEVEL RCP  
SCALE: 1/4" = 1'-0"



2 ROOF/FRAMING PLAN  
SCALE: 1/4" = 1'-0"



3 EAST ELEVATION  
SCALE: 1/4" = 1'-0"

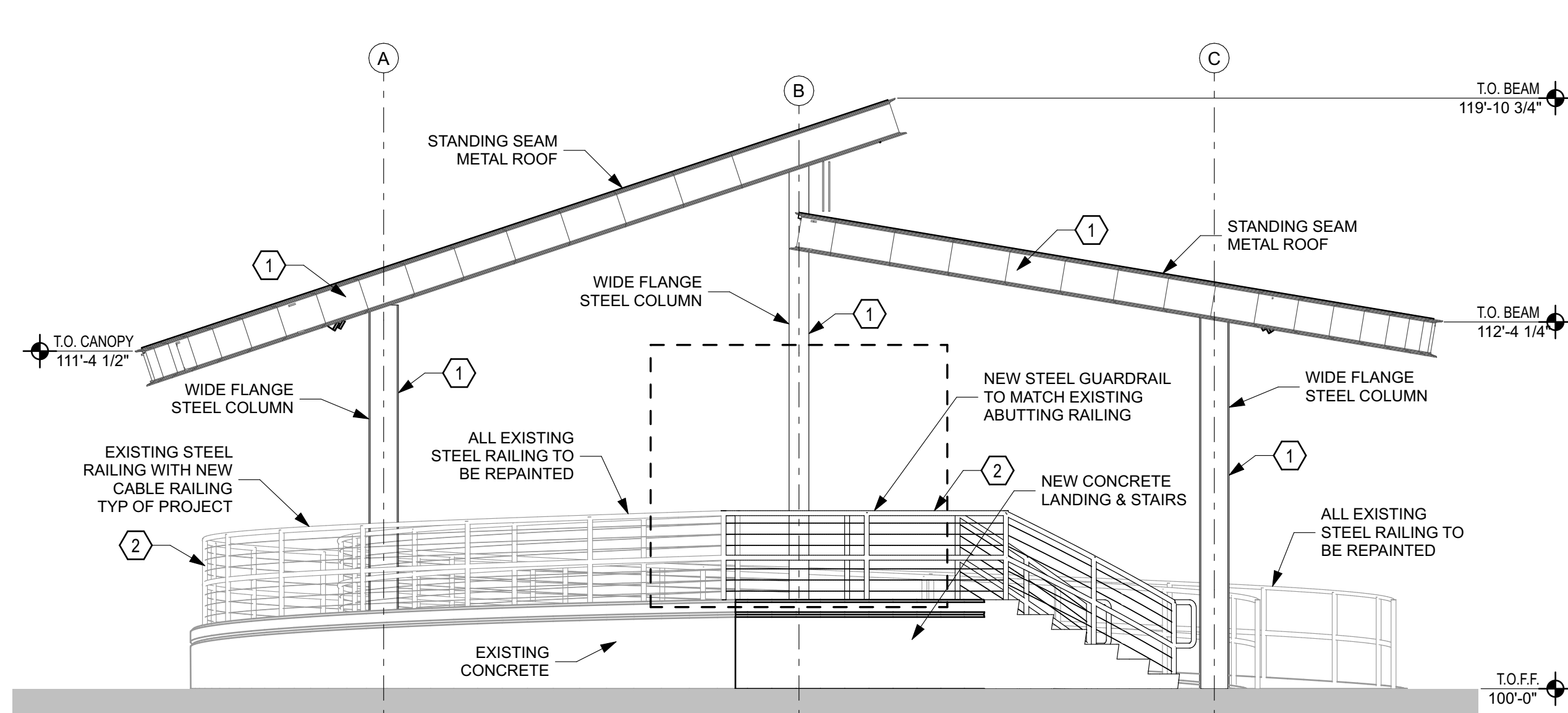


4 STAIR SECTION  
SCALE: 1/2" = 1'-0"

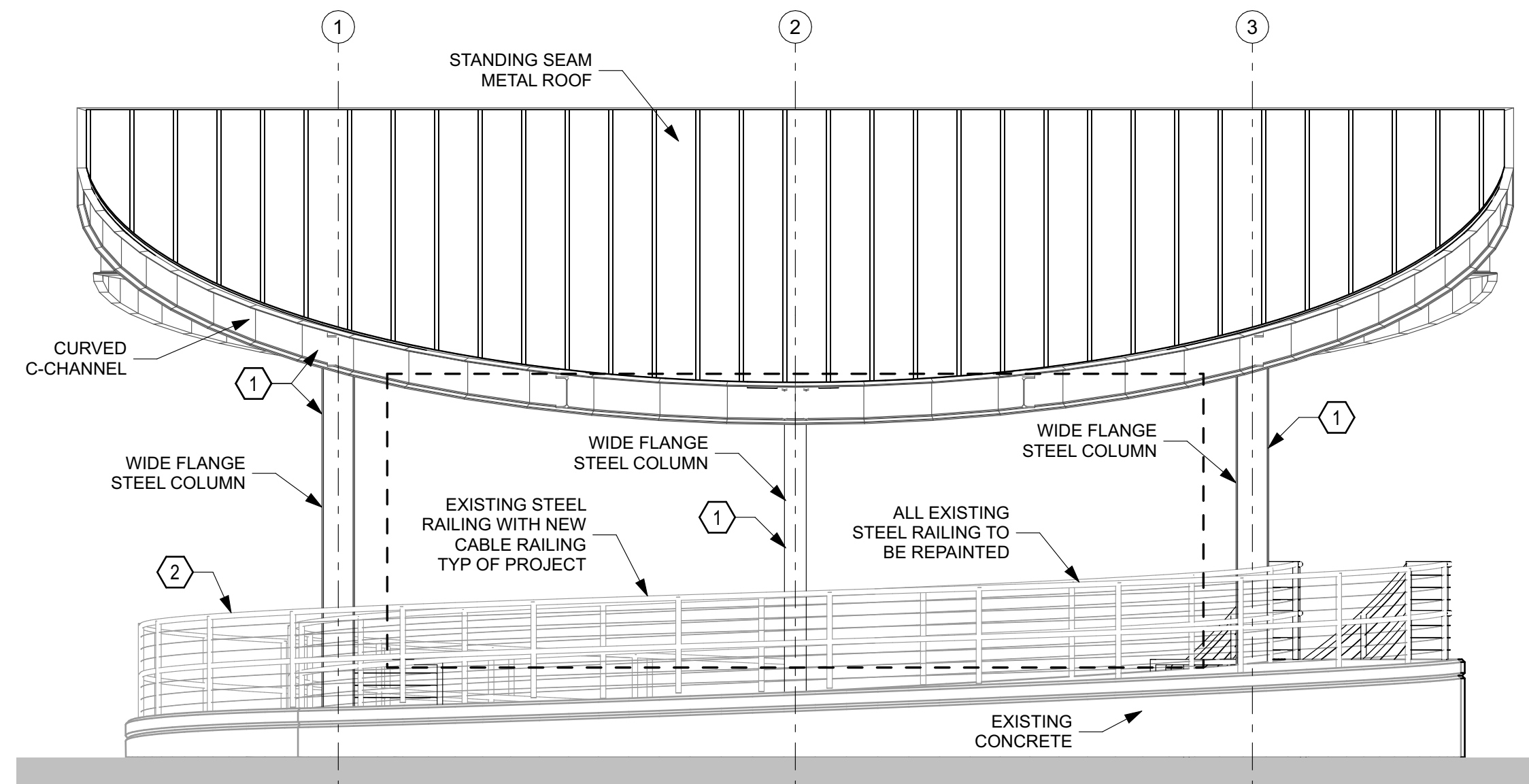
FINISH LEGEND	
PAINT COLORS	
1	SHERWIN-WILLIAMS "IRON ORE" SW7069. SATIN FINISH
2	SHERWIN-WILLIAMS "URBANE BRONZE" SW7048. SATIN FINISH

PRELIMINARY  
DRAWING -  
NOT FOR  
CONSTRUCTION

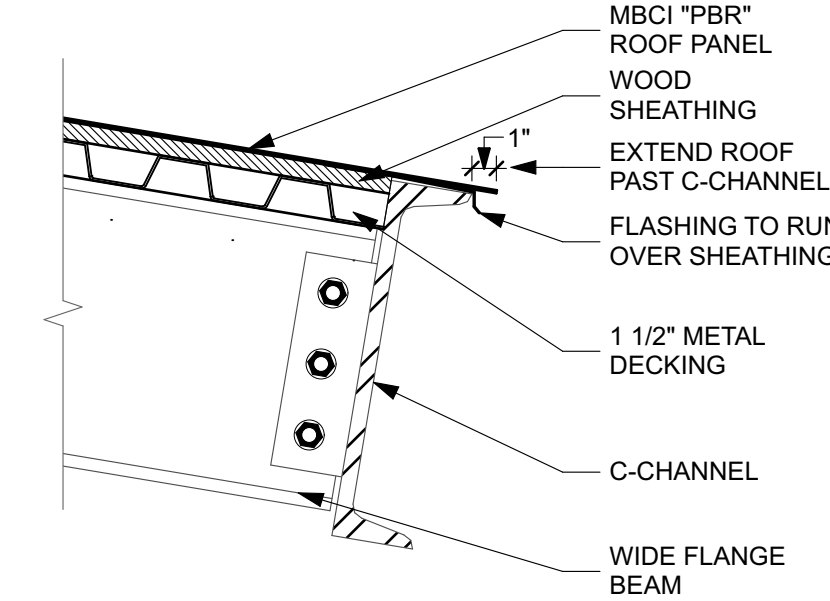




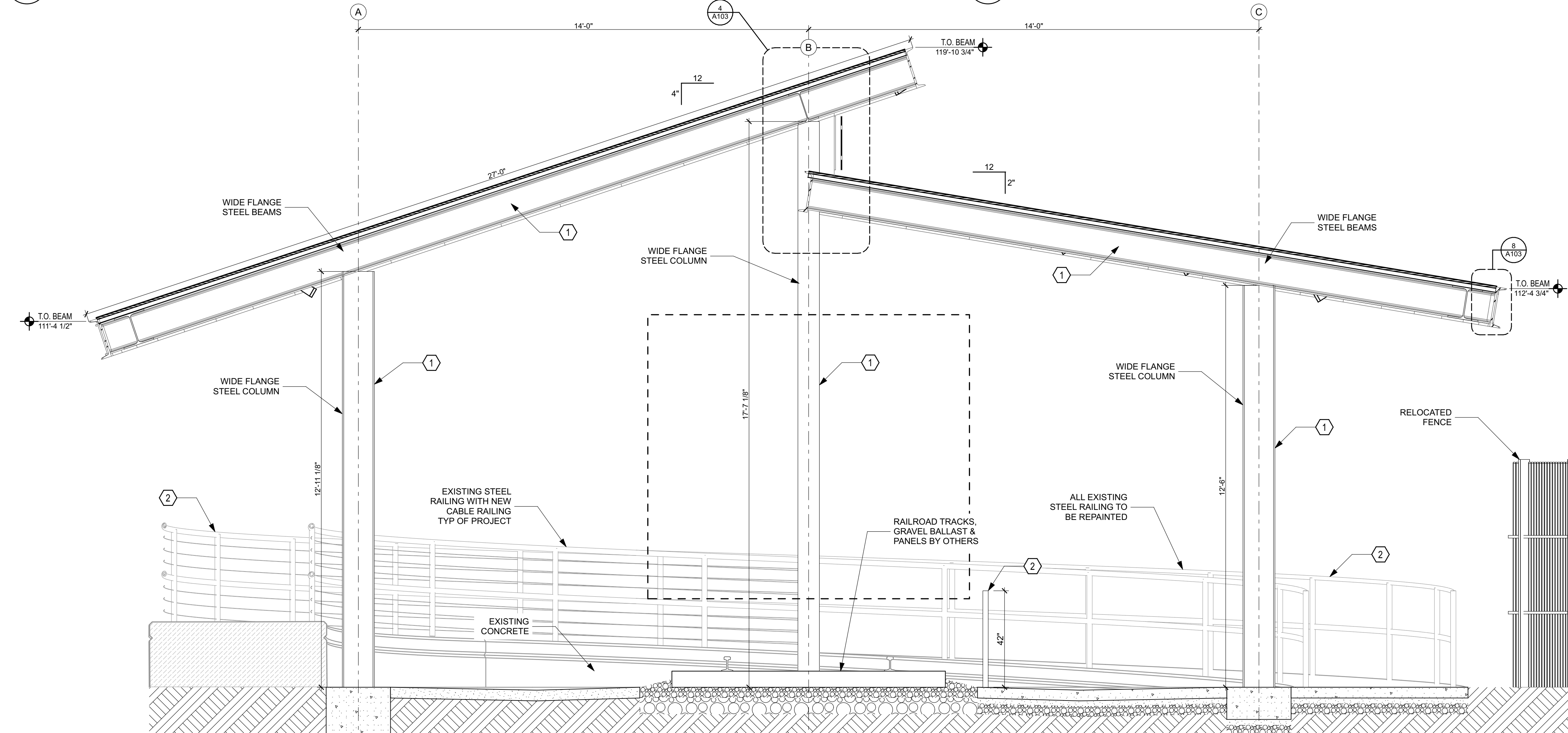
**1 SOUTH ELEVATION**  
SCALE: 1/4" = 1'-0"



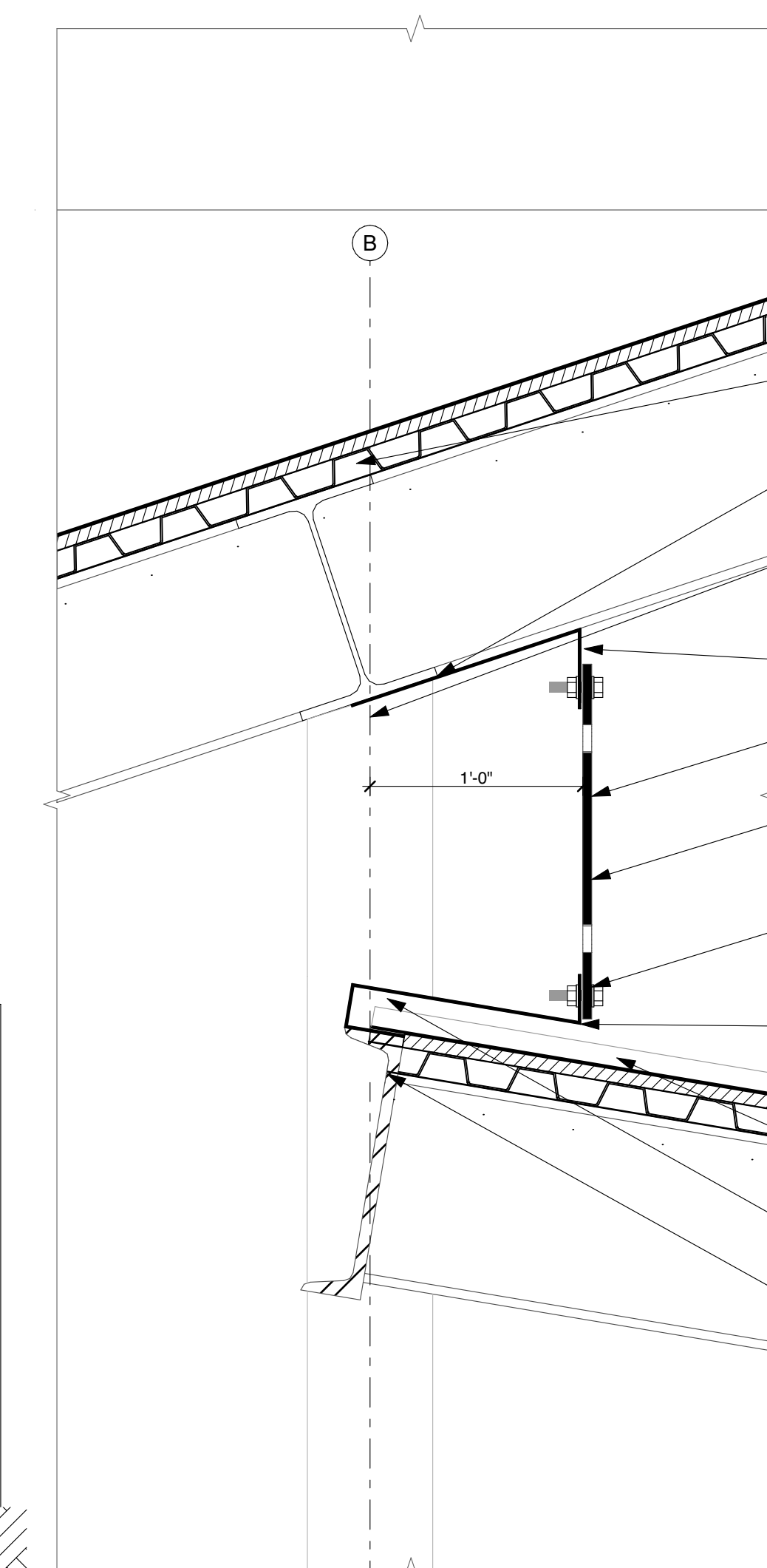
**2 WEST ELEVATION**  
SCALE: 1/4" = 1'-0"



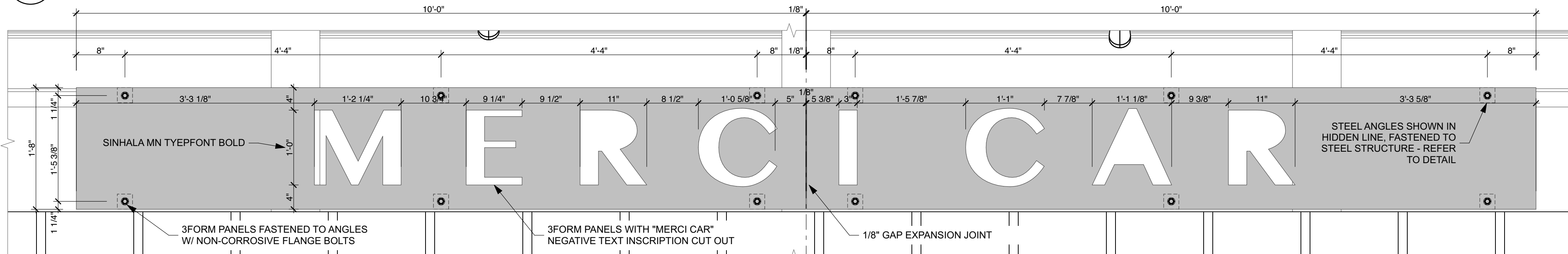
**8 FASCIA DETAIL**  
SCALE: 1 1/2"= 1'-0"



**3 BUILDING SECTION**  
SCALE: 1/2" = 1'-0"



**4 SIGNAGE FASTENING DETAIL**  
SCALE: 1 1/2"= 1'-0"



**7 SIGANCE ELEVATION**  
SCALE: 1" = 1'-0"

FINISH LEGEND	
PAINT COLORS	
1	SHERWIN-WILLIAMS "IRON ORE" SW7069. SATIN FINISH
2	SHERWIN-WILLIAMS "URBANE BRONZE" SW7048. SATIN FINISH

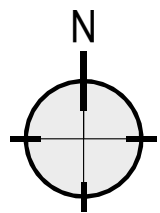
PRELIMINARY  
DRAWING -  
NOT FOR  
CONSTRUCTION



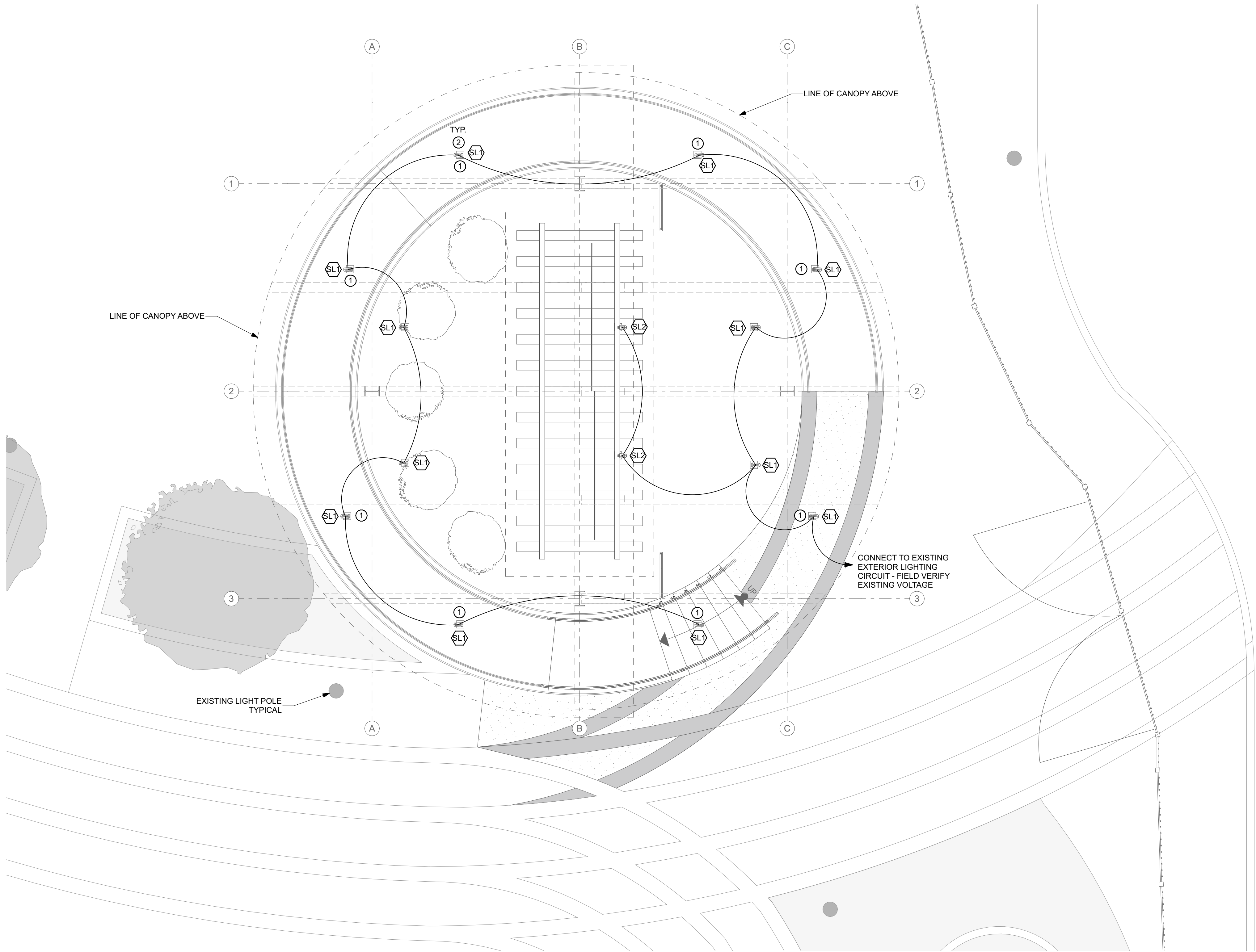
Union Station  
**MERCICAR DISPLAY CANOPY**  
2501 WALL AVE  
OGDEN, UT 84401  
MOUNTAIN WEST ARCHITECTURE | 543 25TH STREET - OGDEN, UT 84401 | PH: 801-388-6052 | www.mountainwestarchitecture.com

SHEET TITLE:  
**ELEVATIONS/  
SECTIONS**  
SHEET NUMBER:  
**A103**  
PROJECT: CM-219  
DO NOT SCALE DRAWING





1 LIGHTING PLAN  
SCALE: 1/4" = 1'-0"



KEY NOTES:

- 1 LIGHTS TO BE AIMED STRAIGHT DOWN.
- 2 MOUNT J-BOX TO UNDERSIDE OF ROOF STRUCTURE.

GENERAL ELECTRICAL NOTES

**CONDUIT & WIRE SIZES**  
All conduit and wire sizes shall be 1/2" C, 2-#12, 1-#12 GND unless otherwise noted. All 120 volt circuits longer than 100 ft. shall be #10 AWG. Branch circuit conductors shall be copper type THWN/THHN. All underground conduits shall be PVC. All overhead conduits shall be EMT, overhead conduit exposed to damage shall be RMC.

**ELECTRICAL DESIGN**  
All electrical work shall conform to the 2023 edition of the National Electrical Code (NFPA 70) as a minimum, and to any state and local codes.

FIXTURE SCHEDULE:

- SL1 JUNO #R612L CPY 27K 80CRI MVOLT WFL BL (OR EQUAL)  
DIRECT CANOPY MOUNT LED CYLINDER - 37 WATTS
- SL2 JUNO #R600L CPY G2 27K 80CRI MVOLT FL BL (OR EQUAL)  
DIRECT CANOPY MOUNT LED CYLINDER - 10 WATTS



SEAL:

REV. DATE DESCRIPTION  
10-23-2025 PROGRESS SET

Union Station  
MERCIER CAR DISPLAY CANOPY

2501 WALL AVE  
OGDEN, UT 84401

MOUNTAIN WEST ARCHITECTURE | 543 25TH STREET - OGDEN, UT 84401 | PH: 801-388-6052 | WWW.MOUNTAINWESTARCHITECTURE.COM

PROJECT:

SHEET TITLE:

LIGHTING PLAN

PROJECT: CM-219

SHEET NUMBER:

E111

DO NOT SCALE DRAWING

PRELIMINARY  
DRAWING -  
NOT FOR  
CONSTRUCTION