

Ogden City Engineering

JEFFERSON 32ND 33RD

ORCHARD WATER

PROJECT AREA:
JEFFERSON AVE, 32ND ST,
ORCHARD, 33RD ST

SHEET INDEX

1	G1	TITLESHEET
2	SC1	SURVEY CONTROL
3	G2	CROSS REFERENCE SHEET
4	W1	WATER LINE PLAN & PROFILE
5	W2	WATER LINE PLAN & PROFILE
6	W3	WATER LINE PLAN & PROFILE
7	W4	WATER LINE PLAN & PROFILE
8	W5	WATER LINE PLAN & PROFILE
9	W6	WATER LINE PLAN & PROFILE
10	W7	WATER LINE PLAN & PROFILE
11	SS1	MADISON SEWER MANHOLE
12	DT1	DETAILS
13	DT2	DETAILS

TITLESHEET

JEFFERSON 32ND 33RD ORCHARD
JEFFERSON 32ND 33RD ORCHARD LOOP

DESIGNED **DATE** 4/15/2025
DRAWN **BJM**
CHECKED **BJM** **TON**

DRAWING SCALE
H: NONE (22x34)
V: NONE (11x17)
This bar measures
the original drawing



REV	DATE	DESCRIPTION
0		MUDGYT DESCRIPTION

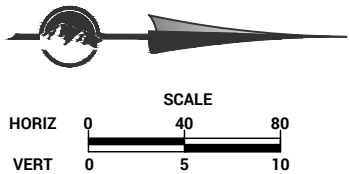
G1

SHEET
1

REVISION
0

NOTES:

1. THE HORIZONTAL DATUM TO BE USED IS THE NAD 83 STATE PLANE UTAH NORTH ZONE GRID
2. THE VERTICAL DATUM TO BE USED IS NAVD 88 USING GEOID 12A.
3. COORDINATE SETTING ALL MONUMENTS FOR THE PROJECT WITH THE CITY SURVEYOR STEVE PORTER 801-629-8979.
4. WATER MAIN ALIGNMENTS SHALL BE PARALLEL TO THE OGDEN CITY RIGHT OF WAY LINES.



DESIGNED	DRAWN	CHECKED	B/M	B/M	DATE
					3/21/2025

DRAWING SCALE

H: 1" = 20' (22x34)
V: 1" = 40' (11x17)

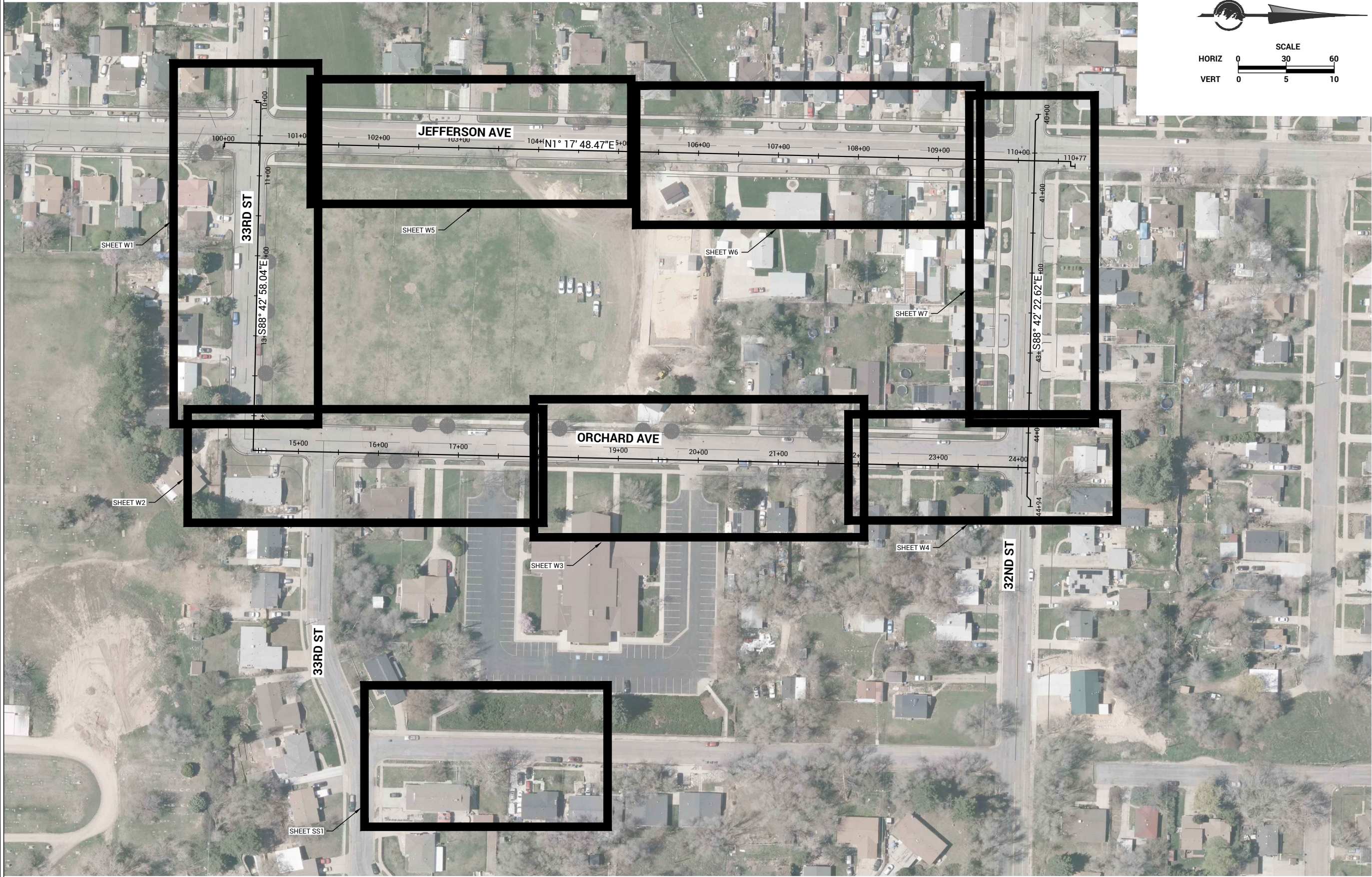
1" = 5' (22x34)
1" = 10' (11x17)

This bar measures
on the original
drawing

SURVEY CONTROL

JEFFERSON 32ND 33RD ORCHARD

JEFFERSON 32ND 33RD ORCHARD LOOP



SHEET CROSS REFERENCE
JEFFERSON 32ND 33RD ORCHARD
JEFFERSON 32ND 33RD ORCHARD LOOP

DESIGNED	DATE	BJM
DRAWN	3/21/2025	BJM
CHECKED		TON

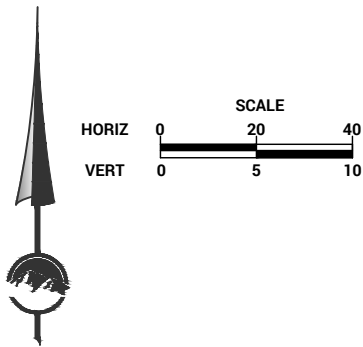
DRAWING SCALE
H: 1" = 20' (22x34)
V: 1" = 40' (11x17)
V: 1" = 5' (22x34)
V: 1" = 10' (11x17)

This bar measures
on the original drawing



REV	DATE	DESCRIPTION
0		MMDDYY DESCRIPTION

G2	0
3	REVISION



KEYED NOTES:

- 1 REMOVE AND REPLACE 30", OGDEN CITY TYPE "A" CONCRETE CURB AND GUTTER PER OGDEN STANDARDS
- 2 REMOVE ASPHALT PAVEMENT
- 3 REMOVE CONCRETE PAVEMENT
- 4 ROADBASE APWA (GRADE 1", 8" THICK) PER STD DWG RD-3)
- 5 3" MINUS GRANULAR IMPORT BORROW (WATER MAIN BACKFILL)
- 6 HMA T-PATCH PG 58-28 SP-1/2" CLASS II INSTALLATION, 5" THICK PER STD DWG RD-3. ENGINEER TO CONFIRM AND APPROVE MAXIMUM EXTENTS IN THE FIELD.
- 7 8" PVC C900 DR18 WATER MAIN (IMPORT SAND BEDDING)
- 8 12" DUCTILE IRON CLASS 350 WATER MAIN (IMPORT SAND BEDDING)
- 9 16" DUCTILE IRON CLASS 350 WATER MAIN (IMPORT SAND BEDDING)
- 10 24" STEEL CASING
- 11 REMOVE VALVE BOX
- 12 REMOVE FIRE HYDRANT (INCLUDES ANY FOOT VALVES AND HYDRANT SHOE)
- 13 FIRE HYDRANT ASSEMBLY
- 14 8" GATE VALVE (CLASS 250)
- 15 12" BUTTERFLY VALVE (CLASS 250)
- 16 16" BUTTERFLY VALVE (CLASS 250)
- 17 1" AWWA C901 SERVICE LINE (CTS POLY)
- 18 2" AWWA C901 SERVICE LINE (CTS POLY)
- 20 RELOCATE & INSTALL NEW 1" WATER METER ASSEMBLY AND TAP
- 21 1" WATER METER ASSEMBLY AND TAP
- 23 EXISTING WATER MAIN CONNECTION
- 24 16" STEEL CASING
- 25 1" AIR COMBINATION VALVE PER OGDEN STD DETAIL W-14

NOTES:

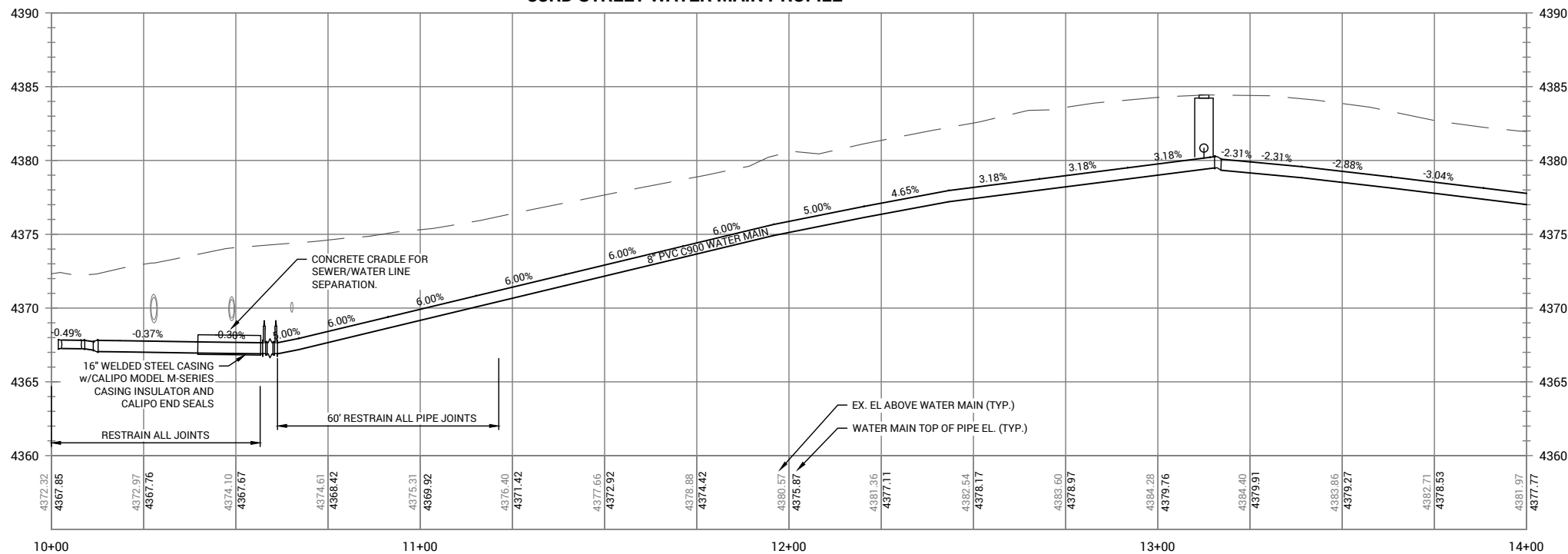
1. THE PROPOSED WATER MAIN SHALL HAVE NO LOCKING GASKETS FOR PIPE JOINT RESTRAINTS.
2. USE ALL IMPORT BACKFILL (3" MINUS A-1-a CRUSHED) FOR WATER MAIN. USE 3/8" MINUS BEDDING SAND FOR PIPE BEDDING.
3. ALL 1" TAPS (AND MATERIALS) TO BE PROVIDED BY CONTRACTOR. ALL 2" TAPS ARE TO BE PERFORMED BY OGDEN CITY WATER CREWS. PURCHASE 2" SETTER ASSEMBLY AND TAPPING MATERIALS DIRECTLY FROM THE OGDEN CITY WATER DIVISION.
4. TRACER WIRE TO BE INSTALLED WITH ALL WATER MAIN, SERVICES, AND HYDRANTS. INSTALL GROUNDING RODS AT ALL WATER MAIN POINTS OF CONNECTION AND AT ALL HYDRANTS.
5. CONFIRM AVAILABILITY OF ALL MATERIALS BEFORE COMMENCING EXCAVATION.
6. SMALL PIECES OF PIPE BETWEEN MJ FITTINGS FOR CONNECTION SHALL BE DUCTILE IRON PIPE.
7. FOLLOW ALL 811 BLUE STAKES REQUIREMENTS PER THE 811 EXCAVATOR GUIDE AND UTAH STATE CODE.
8. ALL TAPS, FITTING, AND APPURTENANCES SHALL HAVE A MINIMUM SEPARATION OF 2 FT FROM EACH OTHER OR FROM ANY PIPE JOINT.

EXISTING SERVICE LINE INFORMATION:

611 33RD - 3/4" COPPER, 5/8" METER
633 33RD - 3/4" POLY, 5/8" METER
635 33RD - 3/4" POLY, 5/8" METER
645 33RD - 1" COPPER, 3/4" METER

33RD STREET EX. PRESSURE = 66 - 68 psi
33RD STREET PROP. PRESSURE = 94 - 91 PSI

33RD STREET WATER MAIN PROFILE



WATER MAIN PLAN & PROFILE

JEFFERSON 32ND 33RD ORCHARD
JEFFERSON 32ND 33RD ORCHARD LOOP

Ogden UTAH
Still Untamed™

2549 Washington Blvd, Suite 760 Ogden, UT 84401
Phone: 801-625-8980 engineering.ogden@ogden-utah.com

PLOT DATE: 3/25/2025 3:13 PM

DRAWING NAME: W1-x.dwg

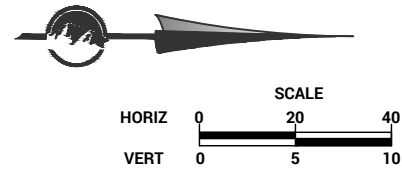
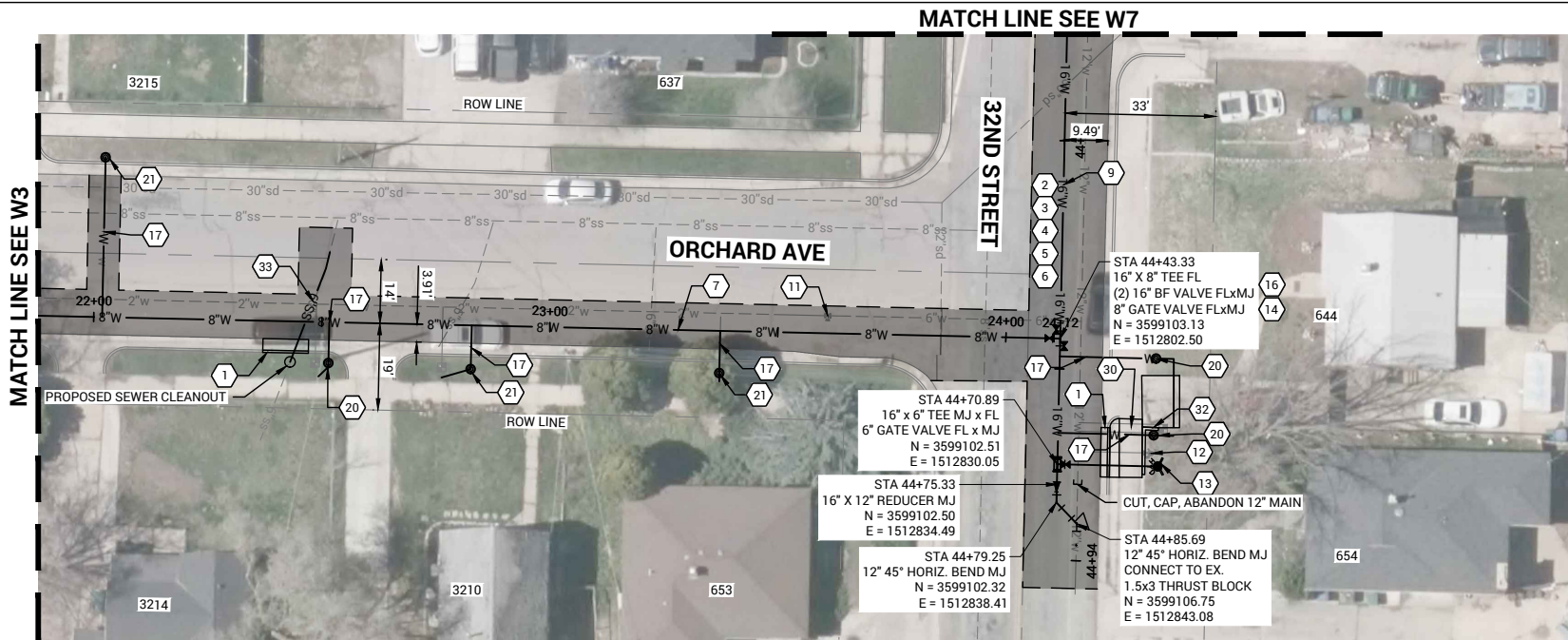


DESIGNED ▲	BJM	DATE
DRAWN ▲	BJM	3/25/2025

DRAWING SCALE
H: 1" = 20' (22x34)
V: 1" = 5' (22x34)

REV	DATE	DESCRIPTION
0		MODIFY DESCRIPTION

W1	0
SHEET	4
REVISION	



KEYED NOTES:

- 1 REMOVE AND REPLACE 30", OGDEN CITY TYPE "A" CONCRETE CURB AND GUTTER PER OGDEN STANDARDS
- 2 REMOVE ASPHALT PAVEMENT
- 3 REMOVE CONCRETE PAVEMENT
- 4 ROADBASE APWA (GRADE 1", 8" THICK) PER STD DWG RD-3)
- 5 3" MINUS GRANULAR IMPORT BORROW (WATER MAIN BACKFILL)
- 6 HMA T-PATCH PG 58-28 SP-1/2" CLASS II INSTALLATION, 5" THICK PER STD DWG RD-3. ENGINEER TO CONFIRM AND APPROVE MAXIMUM EXTENTS IN THE FIELD.
- 7 8" PVC C900 DR18 WATER MAIN (IMPORT SAND BEDDING)
- 8 12" DUCTILE IRON CLASS 350 WATER MAIN (IMPORT SAND BEDDING)
- 9 16" DUCTILE IRON CLASS 350 WATER MAIN (IMPORT SAND BEDDING)
- 10 21" STEEL CASING
- 11 REMOVE VALVE BOX
- 12 REMOVE FIRE HYDRANT (INCLUDES ANY FOOT VALVES AND HYDRANT SHOE, SALVAGE TO WATER DEPT.)
- 13 FIRE HYDRANT ASSEMBLY
- 14 8" GATE VALVE (CLASS 250)
- 15 12" BUTTERFLY VALVE (CLASS 250)
- 16 16" BUTTERFLY VALVE (CLASS 250)
- 17 1" AWWA C901 SERVICE LINE (CTS POLY)
- 18 2" AWWA C901 SERVICE LINE (CTS POLY)
- 19 4" PVC C900 DR18 WATER SERVICE INSTALLATION
- 20 RELOCATE & INSTALL NEW 1" WATER METER ASSEMBLY AND TAP
- 21 1" WATER METER ASSEMBLY AND TAP
- 22 2" WATER METER ASSEMBLY (NEW SETTER ASSEMBLY) AND TAP (USE EXISTING VAULT AND METER)
- 23 EXISTING WATER MAIN CONNECTION
- 30 REMOVE & REPLACE CONCRETE SIDEWALK 6" THICK
- 32 REMOVE & REPLACE CONCRETE WALL (LESS THAN 3 FT TALL)
- 33 RECONSTRUCT, LOWER 6" SEWER LATERAL WITH PVC SDR-30 SEWER PIPE. CONCRETE CRADLE (BETWEEN WATER AND SEWER), AND INSTALL SEWER CLEANOUT WITH CHRISTY BOX.

NOTES:

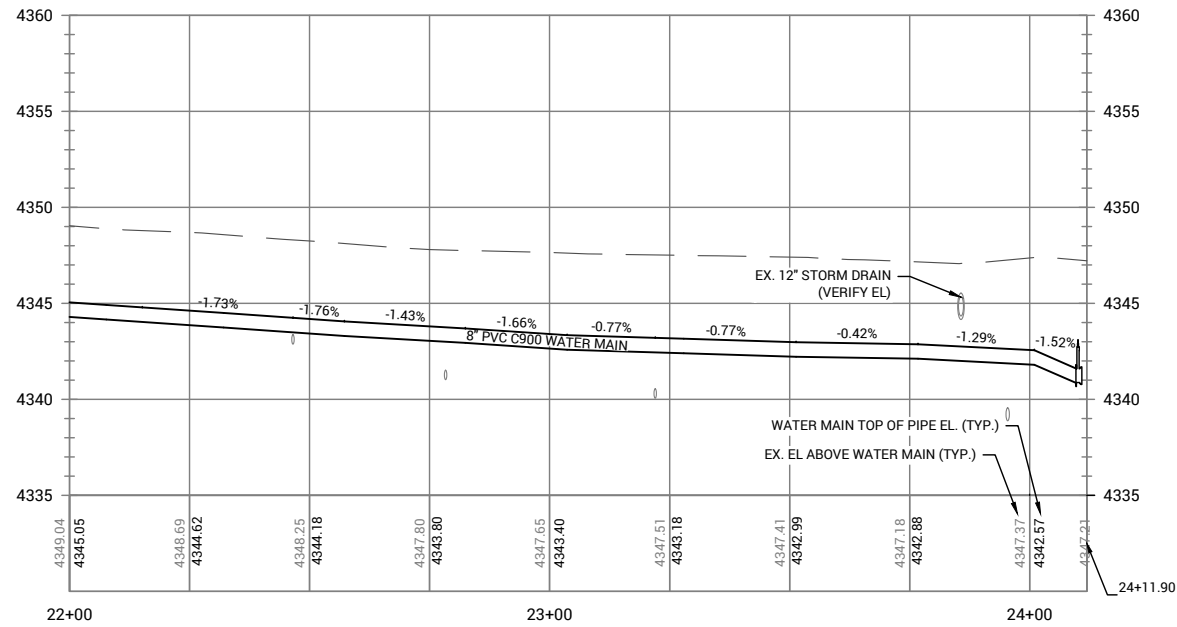
1. THE PROPOSED WATER MAIN SHALL HAVE NO LOCKING GASKETS FOR PIPE JOINT RESTRAINTS.
2. USE ALL IMPORT BACKFILL (3" MINUS A-1-a CRUSHED) FOR WATER MAIN.
3. ALL 1" TAPS (AND MATERIALS) TO BE PROVIDED BY CONTRACTOR. ALL 2" TAPS ARE TO BE PERFORMED BY OGDEN CITY WATER CREWS. PURCHASE 2" SETTER ASSEMBLY AND TAPPING MATERIALS DIRECTLY FROM THE OGDEN CITY WATER DIVISION.
4. TRACER WIRE TO BE INSTALLED WITH ALL WATER MAIN, SERVICES, AND HYDRANTS. INSTALL GROUNDING RODS AT ALL WATER MAIN POINTS OF CONNECTION AND AT ALL HYDRANTS.
5. CONFIRM AVAILABILITY OF ALL MATERIALS BEFORE COMMENCING EXCAVATION.
6. SMALL PIECES OF PIPE BETWEEN MJ FITTINGS FOR CONNECTION SHALL BE DUCTILE IRON PIPE.
7. FOLLOW ALL 811 BLUE STAKES REQUIREMENTS PER THE 811 EXCAVATOR GUIDE AND UTAH STATE CODE.
8. THE EXISTING 2" MAIN ON ORCHARD WILL NEED TO BE MAINTAINED BY THE CONTRACTOR UNTIL THE MAIN IS IN SERVICE.

EXISTING SERVICE LINE INFORMATION:

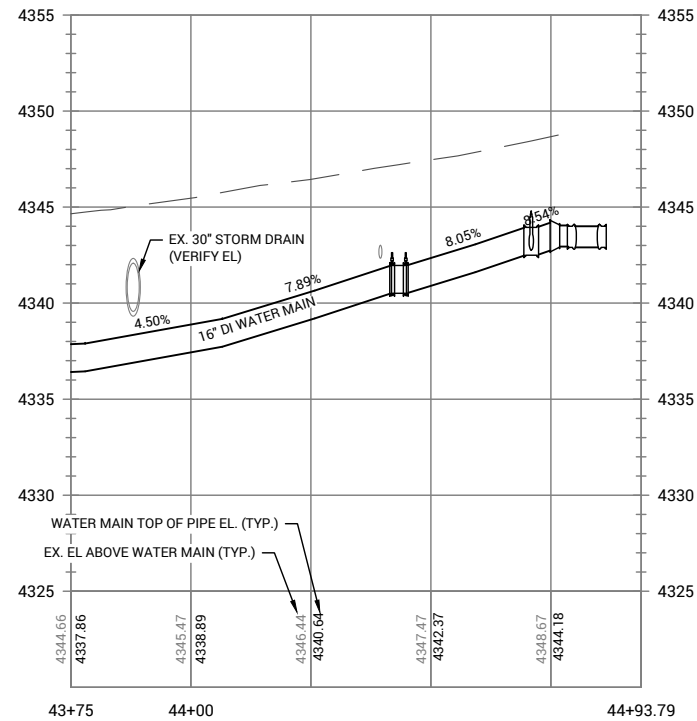
3214 - 3/4" GALVANIZED, 5/8" METER
3210 - 3/4" GALVANIZED, 5/8" METER
637 32ND - 3/4" GALVANIZED, 5/8" METER
644 32ND - 3/4" COPPER, 5/8" METER
653 32ND - 3/4" COPPER, 5/8" METER
654 32ND - 3/4" COPPER, 5/8" METER

3250-3214 ORCHARD EX. PRESSURE =
3250-3214 ORCHARD PROP. PRESSURE =

ORCHARD AVE WATER MAIN PROFILE



32ND ST WATER MAIN PROFILE



DESIGNED ▶	BJM	DATE
DRAWN ▶	BJM	3/25/2025
CHECKED ▶	TDN	

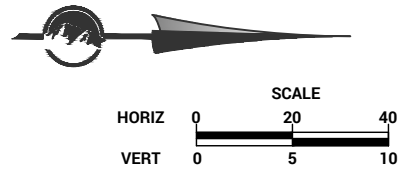
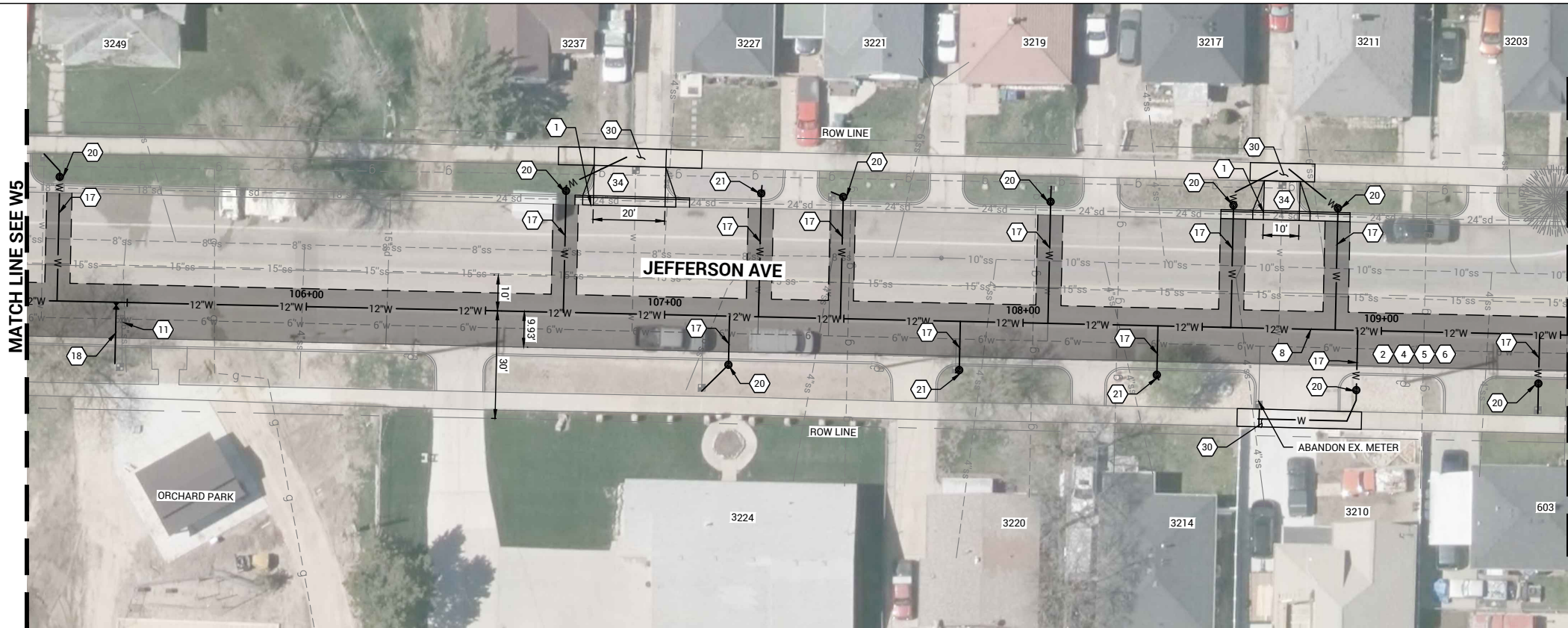
DRAWING SCALE

H: 1" = 20' (22x34)
1" = 40' (11x17)

V: 1" = 5' (22x34)
1" = 10' (11x17)

— This bar measures exactly one inch on the original drawing

WATER MAIN PLAN & PROFILE
JEFFERSON 32ND 33RD ORCHARD
JEFFERSON 32ND 33RD ORCHARD LOOP



KEYED NOTES:

- 1 REMOVE AND REPLACE 30", OGDEN CITY TYPE "A" CONCRETE CURB AND GUTTER PER OGDEN STANDARDS
- 2 REMOVE ASPHALT PAVEMENT
- 3 REMOVE CONCRETE PAVEMENT
- 4 ROADBASE APWA (GRADE 1", 8" THICK) PER STD DWG RD-3)
- 5 3" MINUS GRANULAR IMPORT BORROW (WATER MAIN BACKFILL)
- 6 HMA T-PATCH PG 58-28 SP-1/2" CLASS II INSTALLATION, 5" THICK PER STD DWG RD-3. ENGINEER TO CONFIRM AND APPROVE MAXIMUM EXTENTS IN THE FIELD.
- 7 8" PVC C900 DR18 WATER MAIN (IMPORT SAND BEDDING)
- 8 12" DUCTILE IRON CLASS 350 WATER MAIN (IMPORT SAND BEDDING)
- 9 16" DUCTILE IRON CLASS 350 WATER MAIN (IMPORT SAND BEDDING)
- 10 24" STEEL CASING
- 11 REMOVE VALVE BOX
- 12 REMOVE FIRE HYDRANT (INCLUDES ANY FOOT VALVES AND HYDRANT SHOE)
- 13 FIRE HYDRANT ASSEMBLY
- 14 8" GATE VALVE (CLASS 250)
- 15 12" BUTTERFLY VALVE (CLASS 250)
- 16 16" BUTTERFLY VALVE (CLASS 250)
- 17 1" AWWA C901 SERVICE LINE (CTS POLY)
- 18 2" AWWA C901 SERVICE (CTS POLY) INSTALLATION
- 19 4" PVC C900 DR18 WATER SERVICE INSTALLATION (w/4" GATE VALVE CLASS 250)
- 20 RELOCATE & INSTALL NEW 1" WATER METER ASSEMBLY AND TAP
- 21 1" WATER METER ASSEMBLY AND TAP
- 23 EXISTING WATER MAIN CONNECTION
- 34 REMOVE & REPLACE CONCRETE DRIVEWAY 6" THICK (6" THICK ROADBASE)
- 30 REMOVE & REPLACE CONCRETE SIDEWALK 6" THICK (6" THICK ROADBASE)

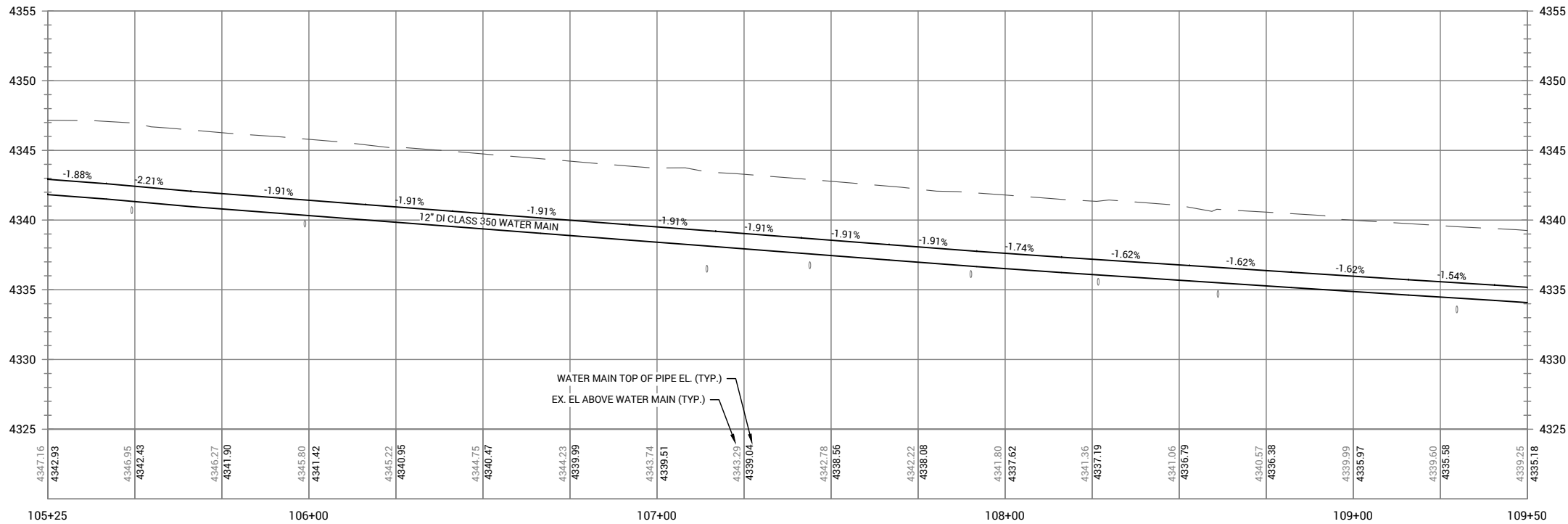
NOTES:

1. THE PROPOSED WATER MAIN SHALL HAVE NO LOCKING GASKETS FOR PIPE JOINT RESTRAINTS.
2. USE ALL IMPORT BACKFILL (3" MINUS A-1-a CRUSHED) FOR WATER MAIN.
3. ALL 1" TAPS (AND MATERIALS) TO BE PROVIDED BY CONTRACTOR. ALL 2" TAPS ARE TO BE PERFORMED BY OGDEN CITY WATER CREWS. PURCHASE 2" SETTER ASSEMBLY AND TAPPING MATERIALS DIRECTLY FROM THE OGDEN CITY WATER DIVISION.
4. TRACER WIRE TO BE INSTALLED WITH ALL WATER MAIN, SERVICES, AND HYDRANTS. INSTALL GROUNDING RODS AT ALL WATER MAIN POINTS OF CONNECTION AND AT ALL HYDRANTS.
5. CONFIRM AVAILABILITY OF ALL MATERIALS BEFORE COMMENCING EXCAVATION.
6. SMALL PIECES OF PIPE BETWEEN MJ FITTINGS FOR CONNECTION SHALL BE DUCTILE IRON PIPE.
7. FOLLOW ALL 811 BLUE STAKES REQUIREMENTS PER THE 811 EXCAVATOR GUIDE AND UTAH STATE CODE.

EXISTING SERVICE LINE INFORMATION:

3249 JEFFERSON - 3/4" COPPER, 5/8" METER
3237 JEFFERSON - 3/4" COPPER, 5/8" METER
3227 JEFFERSON - 3/4" COPPER, 5/8" METER
3224 JEFFERSON - UNKNOWN, 5/8" METER
3221 JEFFERSON - 3/4" COPPER, 5/8" METER
3220 JEFFERSON - 1" COPPER, 3/4" METER
3219 JEFFERSON - 3/4" COPPER, 5/8" METER
3217 JEFFERSON - 1" GALVANIZED, 5/8" METER
3214 JEFFERSON - 3/4" COPPER, 5/8" METER
3211 JEFFERSON - 1" GALVANIZED, 5/8" METER
3210 JEFFERSON - 3/4" GALVANIZED, 5/8" METER
603 32ND ST - 3/4" GALVANIZED, 5/8" METER

JEFFERSON AVE WATER MAIN PROFILE



3249 JEFFERSON EX. PRESSURE = 78 psi
3249 JEFFERSON PROP. PRESSURE = 106 psi

W6

SHEET 9

REVISION 0

REV	DATE	DESCRIPTION
0		MODIFY DESCRIPTION

PROFESSIONAL ENGINEER

9800042-2203

BRADLEY

3/21/25

STATE OF UTAH

DESIGNED

DRAWN

CHECKED

DATE

3/25/2025

B/M

B/M

TON

DRAWING SCALE

H: 1" = 20' (22x34)

V: 1" = 40' (11x17)

V: 1" = 5' (22x34)

V: 1" = 10' (11x17)

THIS BAR MEASURES ONLY ON THE ORIGINAL DRAWING

WATER MAIN PLAN & PROFILE

JEFFERSON 32ND 33RD ORCHARD

JEFFERSON 32ND 33RD ORCHARD LOOP

Ogden UTAH

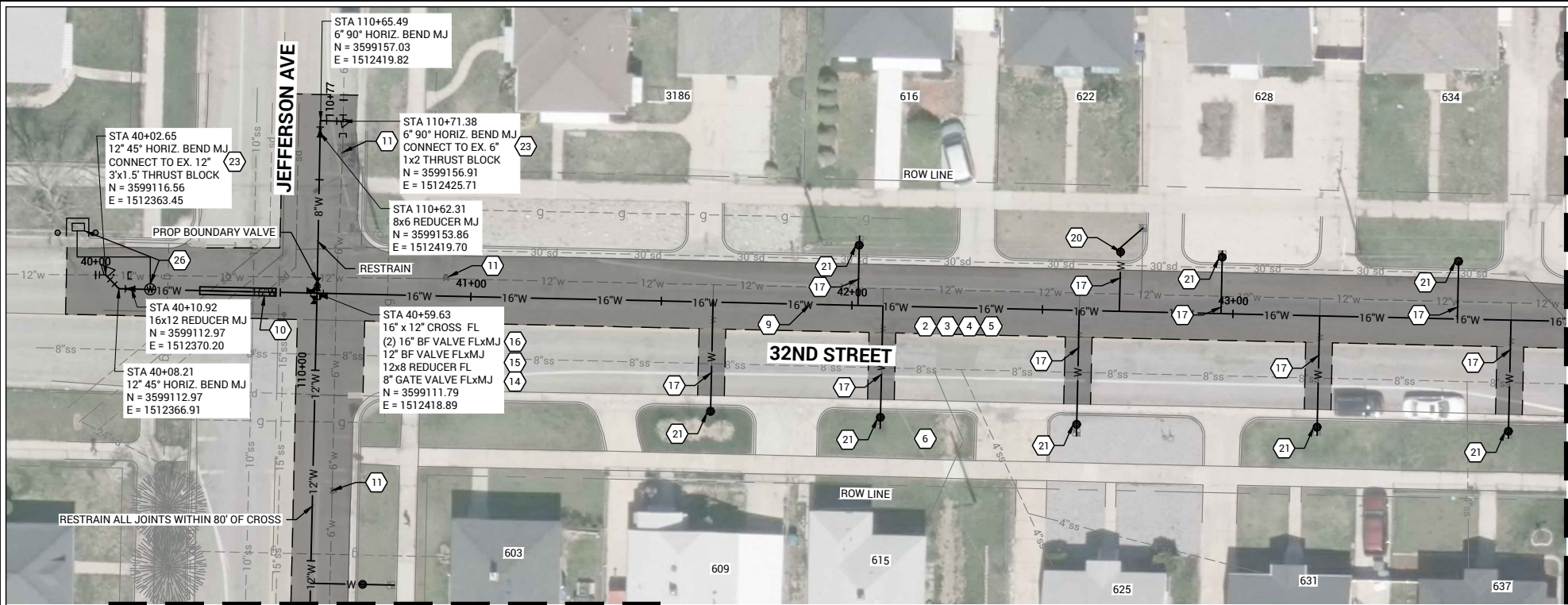
Still Untamed™

2549 Washington Blvd, Suite 760 Ogden, UT 84401

Phone: 801-625-8980 engineering.ogdencity.com

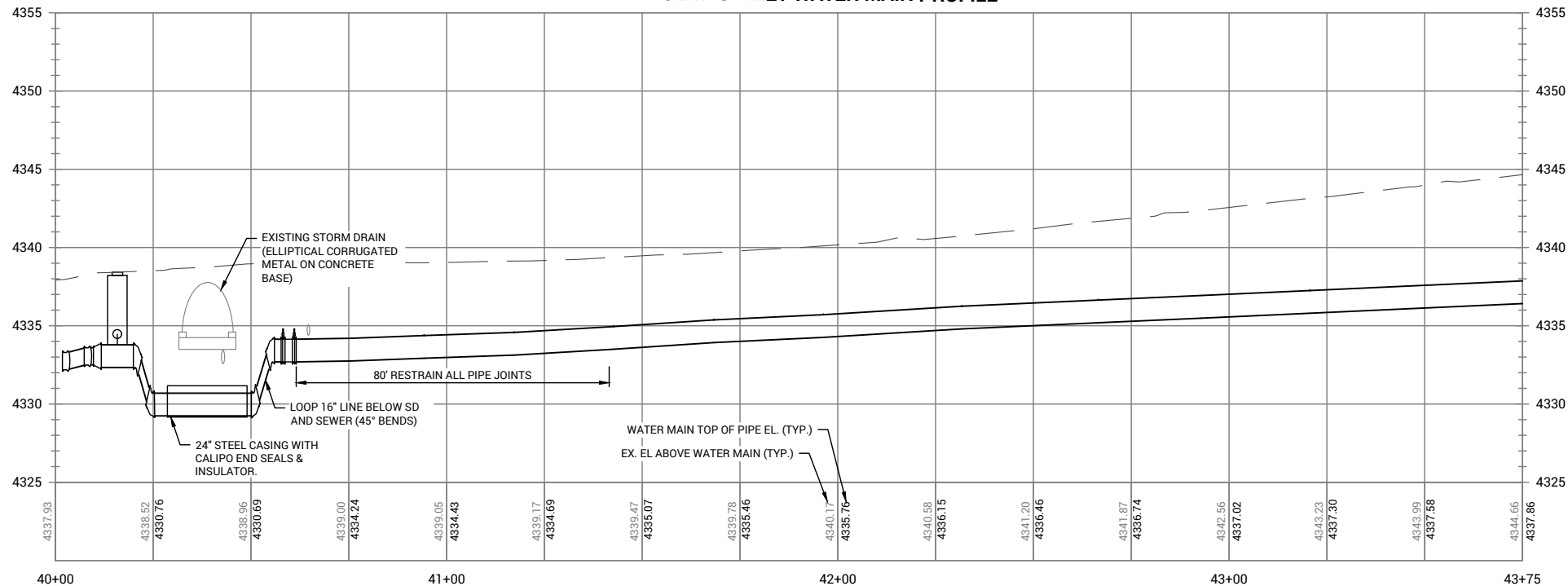
PLOT DATE: 3/25/2025 3:14 PM

DRAWING NAME: W1-x.dwg



MATCH LINE SEE W6

32ND STREET WATER MAIN PROFILE



EXISTING SERVICE LINE INFORMATION:

609 - 3/4\"/>

NOTES:

1. THE PROPOSED WATER MAIN SHALL HAVE NO LOCKING GASKETS FOR PIPE JOINT RESTRAINTS.
2. USE ALL IMPORT BACKFILL (3\"/>
3. ALL 1\"/>
4. TRACER WIRE TO BE INSTALLED WITH ALL WATER MAIN, SERVICES, AND HYDRANTS. INSTALL GROUNDING RODS AT ALL WATER MAIN POINTS OF CONNECTION AND AT ALL HYDRANTS.
5. CONFIRM AVAILABILITY OF ALL MATERIALS BEFORE COMMENCING EXCAVATION.
6. SMALL PIECES OF PIPE BETWEEN MJ FITTINGS FOR CONNECTION SHALL BE DUCTILE IRON PIPE.
7. FOLLOW ALL 811 BLUE STAKES REQUIREMENTS PER THE 811 EXCAVATOR GUIDE AND UTAH STATE CODE.
8. CONTRACTOR IS TO VERIFY EARLY WITH THE SUPPLIER THAT THE BUTTERFLY VALVES CAN FIT ON THE CROSS WITHOUT ANY SPACERS/ADAPTORS.

32ND STREET/JEFFERSON EX. PRESSURE = 108 PSI
32ND STREET/JEFFERSON PROP. PRESSURE = 110 PSI

KEYED NOTES:

- 1 REMOVE AND REPLACE 30\", OGDEN CITY TYPE \"A\" CONCRETE CURB AND GUTTER PER OGDEN STANDARDS
- 2 REMOVE ASPHALT PAVEMENT
- 3 REMOVE CONCRETE PAVEMENT
- 4 ROADBASE APWA (GRADE 1\", 8\" THICK) PER STD DWG RD-3)
- 5 3\" MINUS GRANULAR IMPORT BORROW (WATER MAIN BACKFILL)
- 6 HMA T-PATCH PG 58-28 SP-1/2\" CLASS II INSTALLATION, 5\" THICK PER STD DWG RD-3. ENGINEER TO CONFIRM AND APPROVE MAXIMUM EXTENTS IN THE FIELD.
- 7 8\" PVC C900 DR18 WATER MAIN (IMPORT SAND BEDDING)
- 8 12\" DUCTILE IRON CLASS 350 WATER MAIN (IMPORT SAND BEDDING)
- 9 16\" DUCTILE IRON CLASS 350 WATER MAIN (IMPORT SAND BEDDING)
- 10 24\" STEEL CASING
- 11 REMOVE VALVE BOX
- 12 REMOVE FIRE HYDRANT (INCLUDES ANY FOOT VALVES AND HYDRANT SHOE)
- 13 FIRE HYDRANT ASSEMBLY
- 14 8\" GATE VALVE (CLASS 250)
- 15 12\" BUTTERFLY VALVE (CLASS 250)
- 16 16\" BUTTERFLY VALVE (CLASS 250)
- 17 1\" AWWA C901 SERVICE LINE (CTS POLY)
- 18 2\" AWWA C901 SERVICE LINE (CTS POLY)
- 19 4\" PVC C900 DR18 WATER SERVICE INSTALLATION
- 20 RELOCATE & INSTALL NEW 1\" WATER METER ASSEMBLY AND TAP
- 21 1\" WATER METER ASSEMBLY AND TAP
- 23 EXISTING WATER MAIN CONNECTION
- 26 2\" AIR COMBINATION VALVE ASSEMBLY PER STD DETAIL W-14



WATER MAIN PLAN & PROFILE
JEFFERSON 32ND 33RD ORCHARD
JEFFERSON 32ND 33RD ORCHARD LOOP

Ogden UTAH
Still Untamed™
2549 Washington Blvd, Suite 760 Ogden, UT 84401
Phone: 801-625-8980 engineering.ogdencity.com



DESIGNED	DRAWN	CHECKED	DATE	BJM	BJM	TON
			3/25/2025			

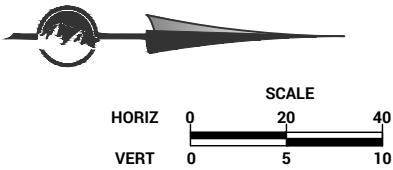
DRAWING SCALE
H: 1\"/>

REV	DATE	DESCRIPTION
0		MODIFY DESCRIPTION

W7
10
0
SHEET
REVISION

PLOT DATE: 3/25/2025 3:14 PM

DRAWING NAME: W1-x.dwg



KEYED NOTES:

- 2 REMOVE ASPHALT PAVEMENT
- 4 ROADBASE APWA (GRADE 1", 8" THICK) PER STD DWG RD-3)
- 5 3" MINUS GRANULAR IMPORT BORROW (BACKFILL)
- 6 HMA T-PATCH PG 58-28 SP-1/2" CLASS II INSTALLATION, 5" THICK PER STD DWG RD-3. ENGINEER TO CONFIRM AND APPROVE MAXIMUM EXTENTS IN THE FIELD.
- 27 INSTALL 5' PRECAST SANITARY SEWER MANHOLE. REINSTATE SEWER MAINS TO MANHOLE. SUPPLY NEW RING/COVER (OGDEN) AND COLLAR MANHOLE.
- 35 REMOVE EXISTING MANHOLE

NOTES:

- 1. CONTRACTOR WILL BE REQUIRED TO ORDER A NEW FRAME/COVER THAT HAS THE OGDEN CREST ON IT PER STANDARD DRAWING SS-5

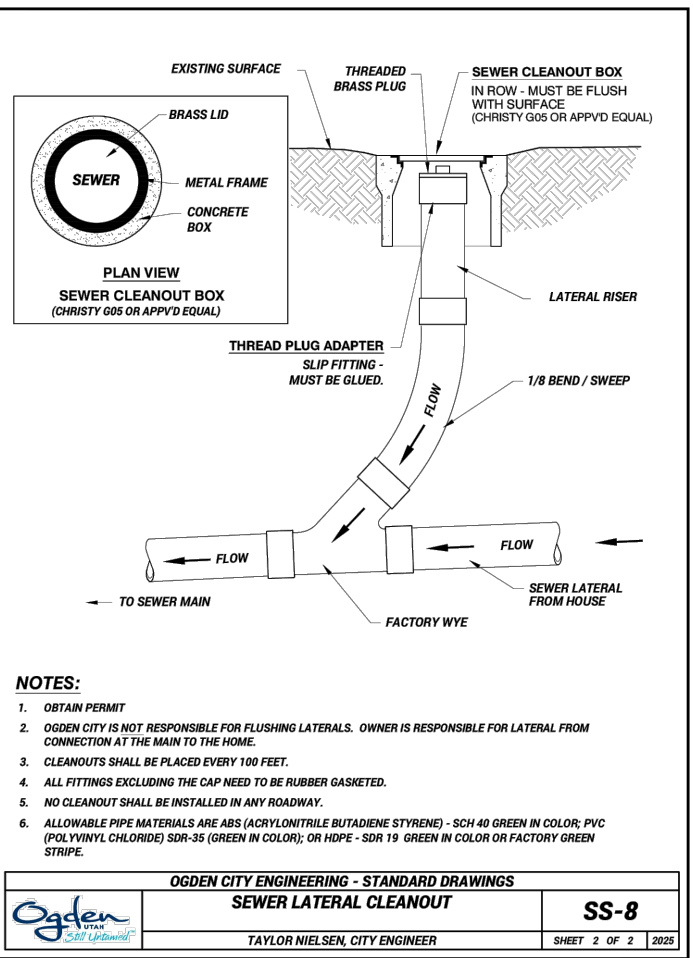
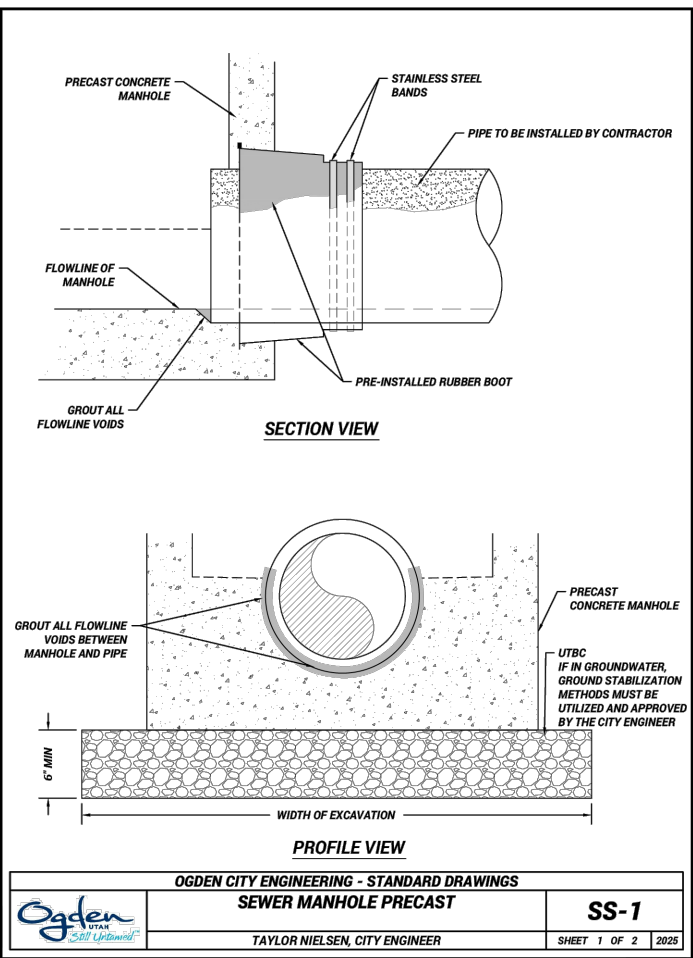
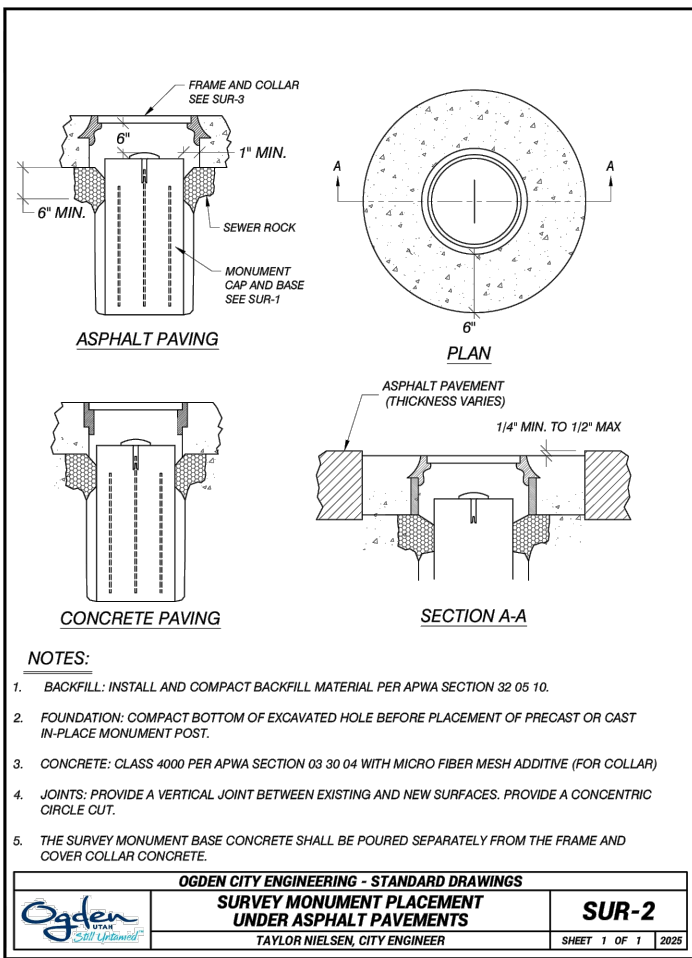
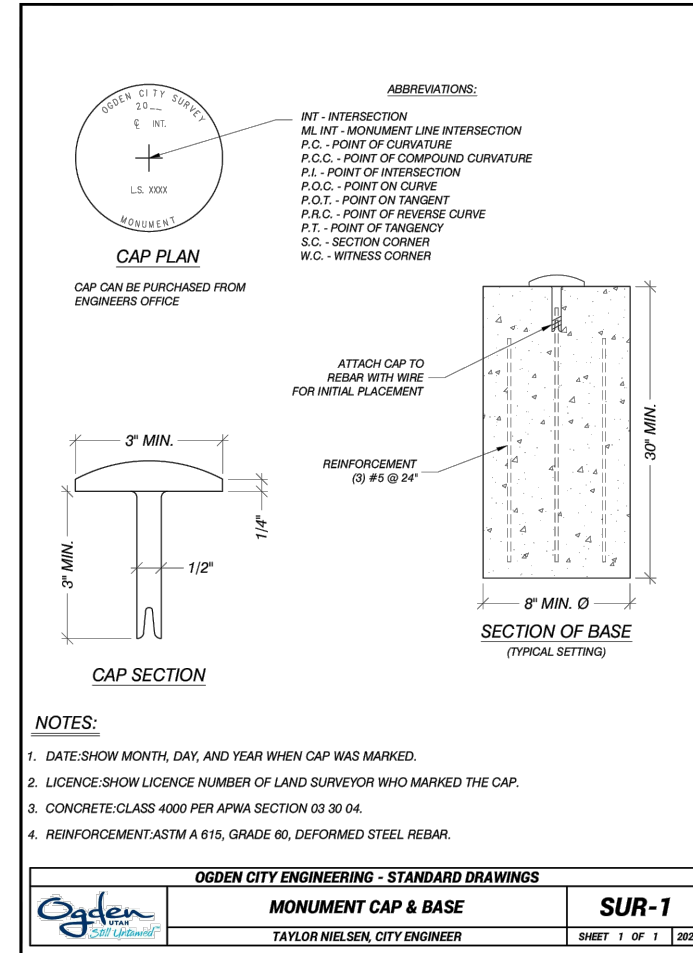
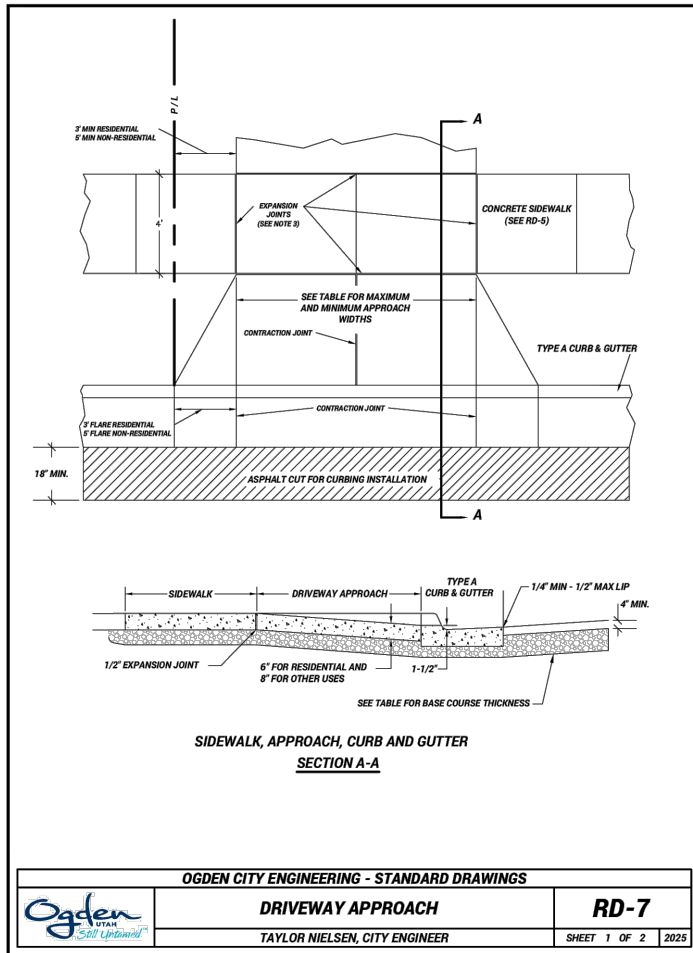
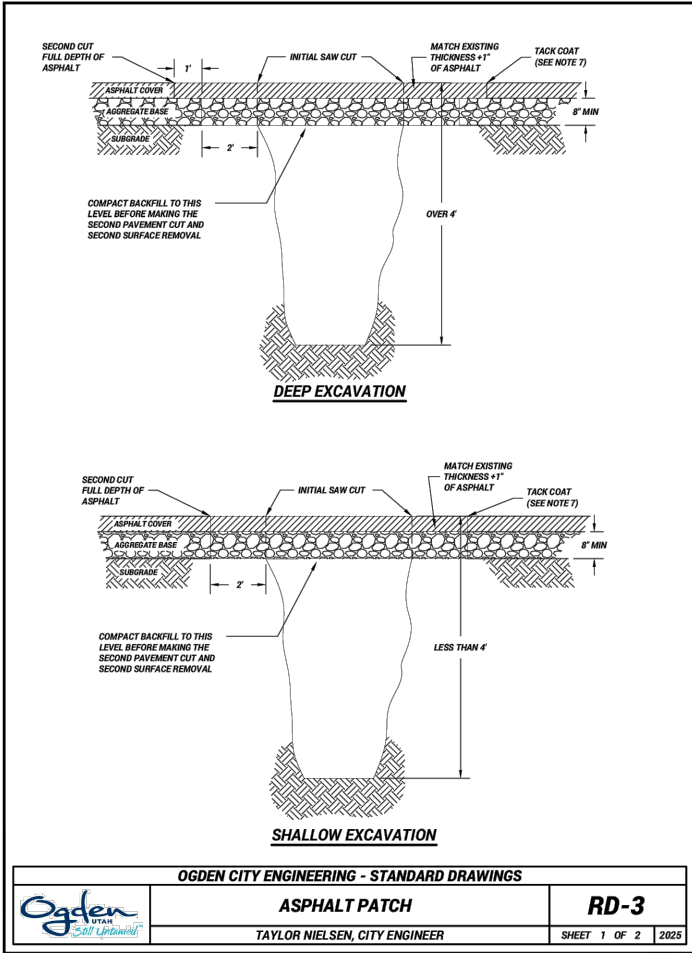


DESIGNED	BJM	DATE
DRAWN	BJM	3/21/2025
CHECKED	TON	

DRAWING SCALE
H: 1" = 20' (22x34)
1" = 40' (11x17)
V: 1" = 5' (22x34)
1" = 10' (11x17)
This bar measures only on the original drawing

MADISON SEWER MANHOLE
JEFFERSON 32ND 33RD ORCHARD
JEFFERSON 32ND 33RD ORCHARD LOOP

REV	DATE	DESCRIPTION
0		INITIAL DESCRIPTION



DT1

SHEET 10

0

REVISION

REV	DATE	DESCRIPTION
0		MUDDRY DESCRIPTION

PROFESSIONAL ENGINEER

9800042-2203

BRADLEY

12/1/25

STATE OF UTAH

DATE

6/1/2023

DESIGNED

BJM

DRAWN

BJM

CHECKED

TON

DRAWING SCALE

H: 1" = 20'

V: 1" = 40'

1" = 5'

1" = 10'

This bar measures on the original drawing

DETAILS

JEFFERSON 32ND 33RD ORCHARD

JEFFERSON 32ND 33RD ORCHARD LOOP

Ogden

UTAH

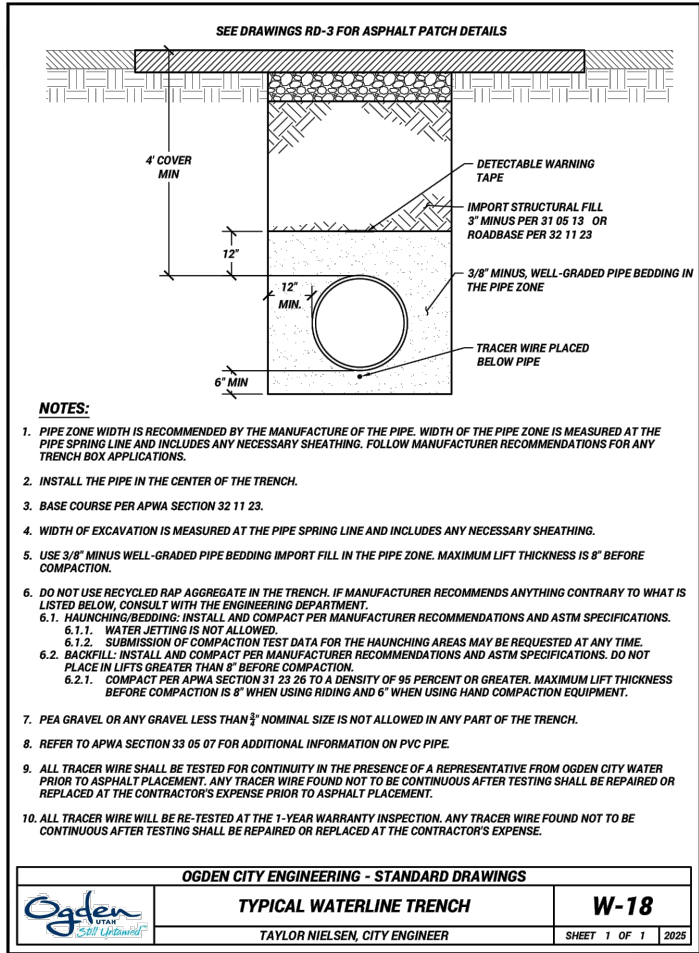
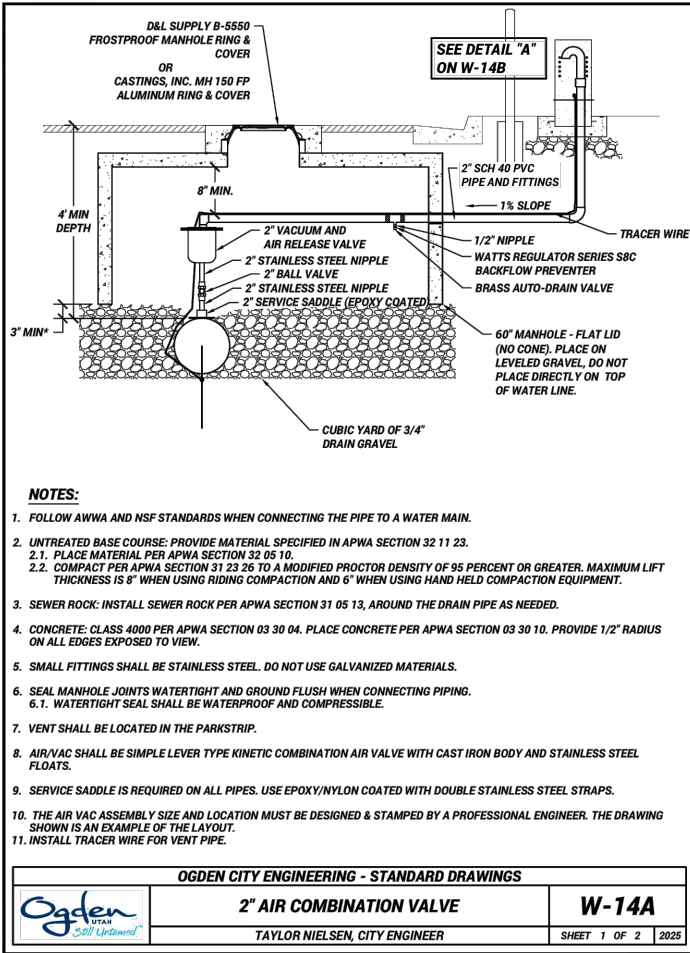
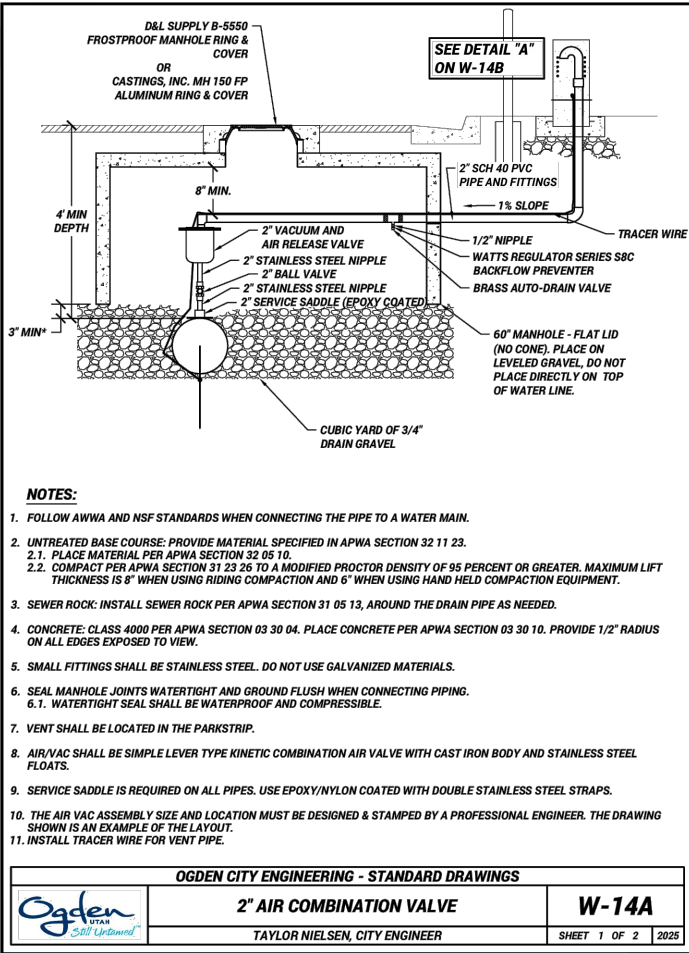
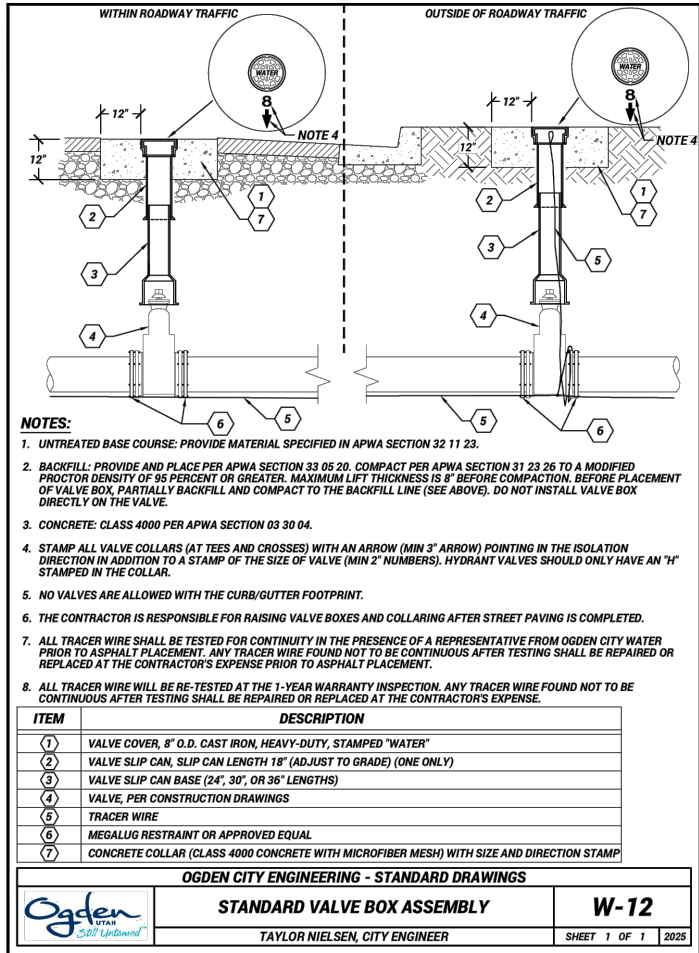
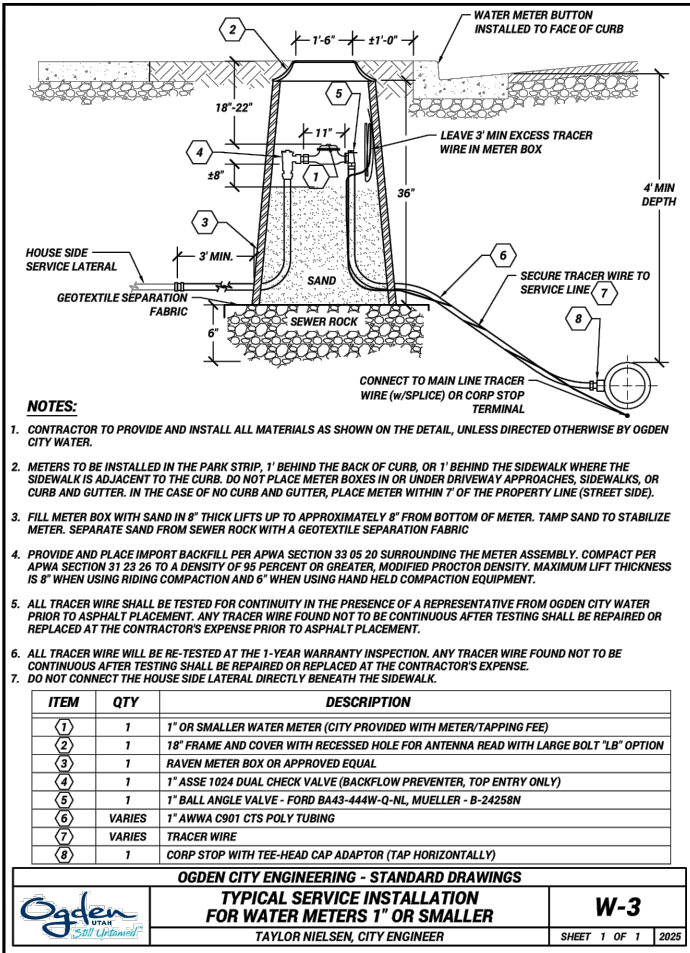
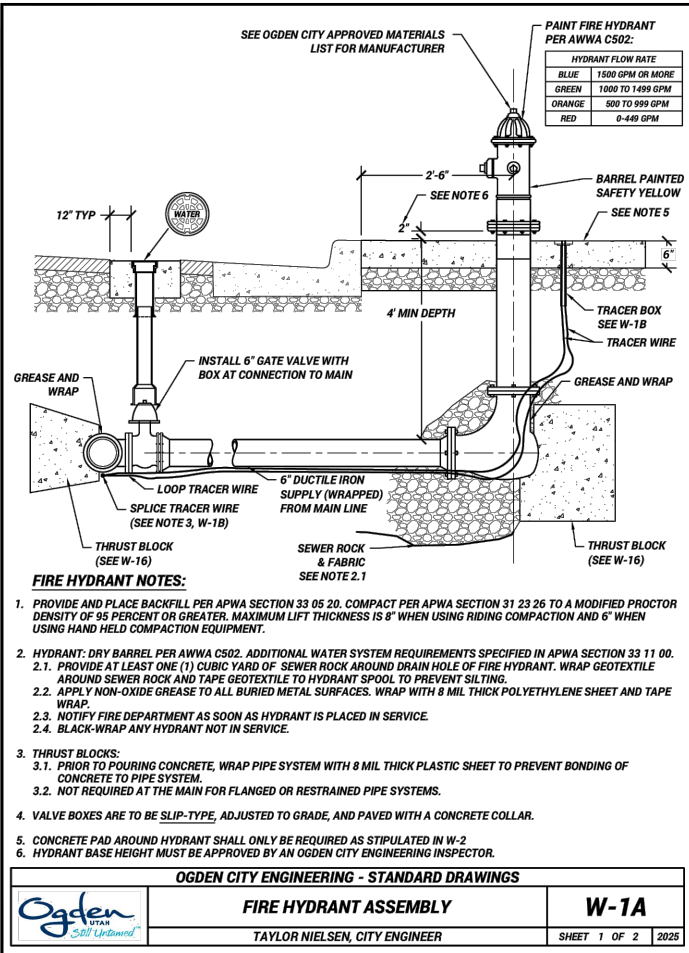
Still Untamed™

2549 Washington Blvd, Suite 760 Ogden, UT 84401

Phone: 801-622-8980 engineering.ogden-city.com

PLOT DATE: 3/25/2025 3:14 PM

DRAWING NAME: DT1.dwg



DT2

SHEET 13

0

REVISION

REV	DATE	DESCRIPTION
0	MIDDY	DESCRIPTION



DESIGNED	DATE	BJM
DRAWN	6/1/2023	TUN
CHECKED	TON	

DRAWING SCALE

H: 1" = 20' (22x34)
V: 1" = 40' (11x17)

1" = 5' (22x34)
1" = 10' (11x17)

This bar measures on drawings and is not to scale. The original drawing is the source of truth.

DETAILS

JEFFERSON 32ND 33RD ORCHARD

JEFFERSON 32ND 33RD ORCHARD LOOP